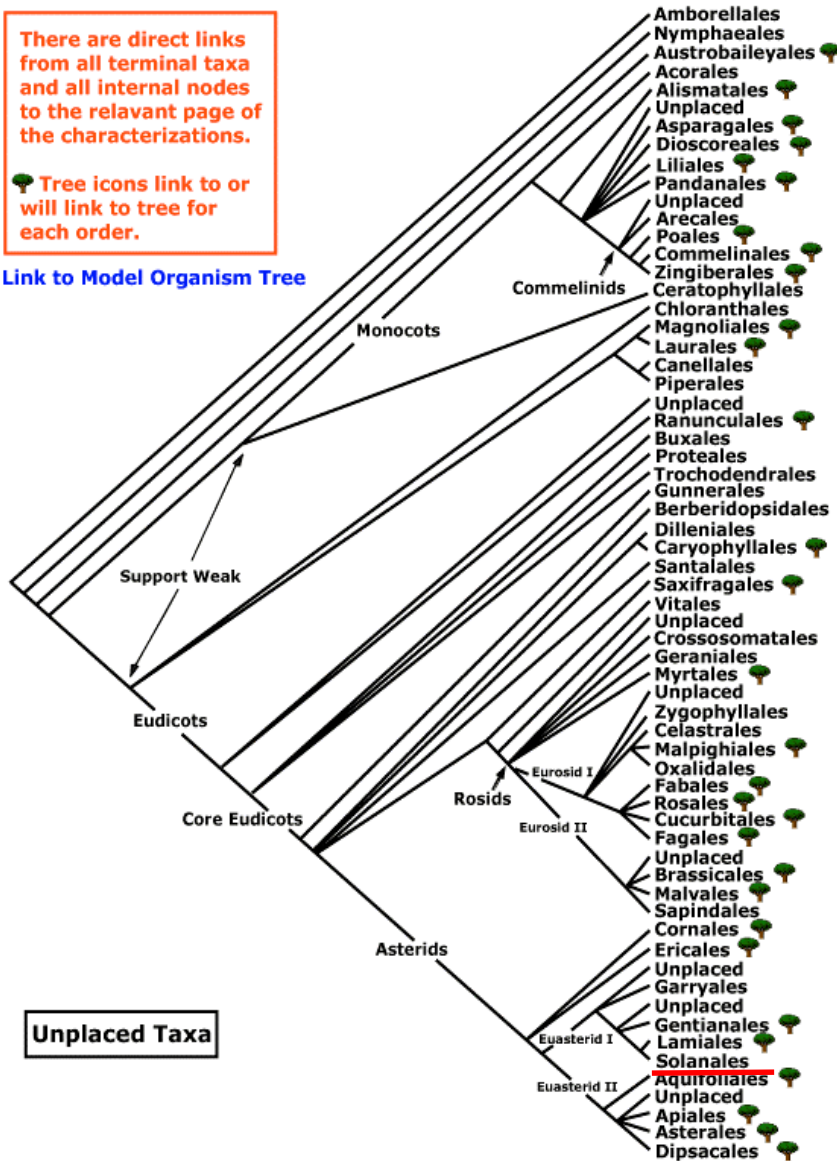


Solanales, Solanaceae

There are direct links from all terminal taxa and all internal nodes to the relevant page of the characterizations.

Tree icons link to or will link to tree for each order.

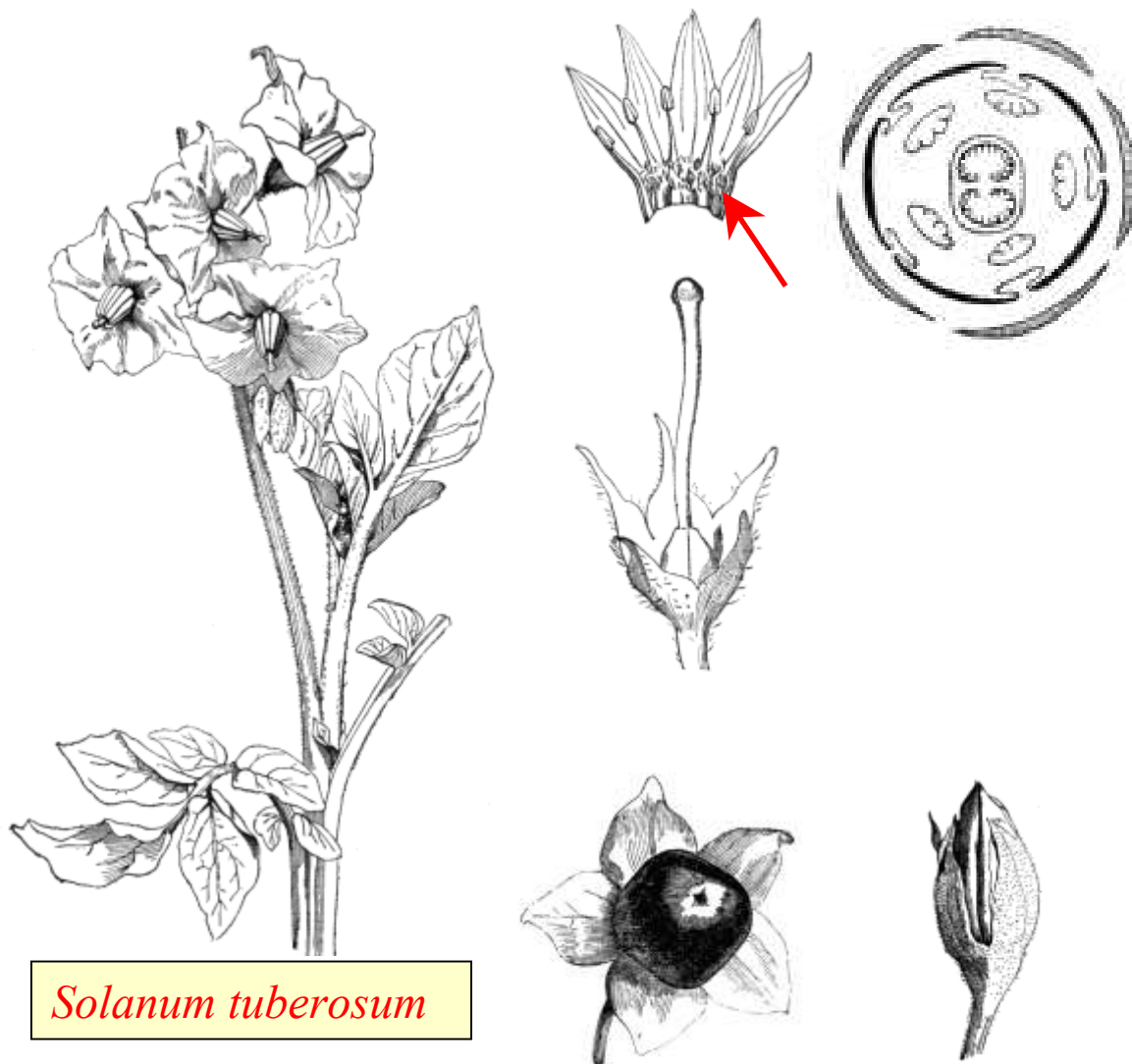
[Link to Model Organism Tree](#)



Solanales, Solanaceae

ř * K(5) [C(5) A5] G(2)

- různé alkaloidy (steroidní, tropanové)
- větvené chlupy
- pyl 3-5-kolpátní
- 150 rodů / 2 950 druhů



Solanum tuberosum

Atropa - bobule

Nicotiana - tobolka



Solanales, Solanaceae



*Solanum
dulcamara*



Datura stramonium



Scopolia carniolica



Physalis alkekengi



Atropa bella-donna



Hyoscyamus niger

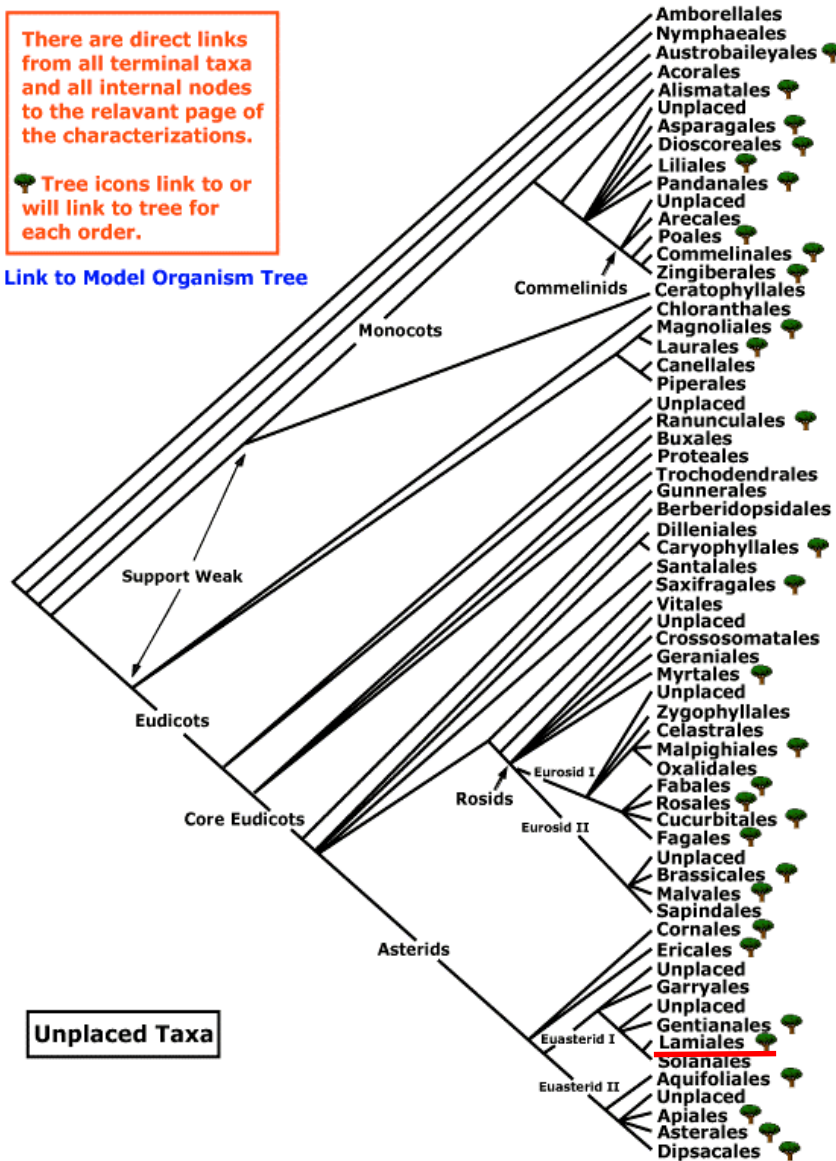


Lamiales, Lamiaceae

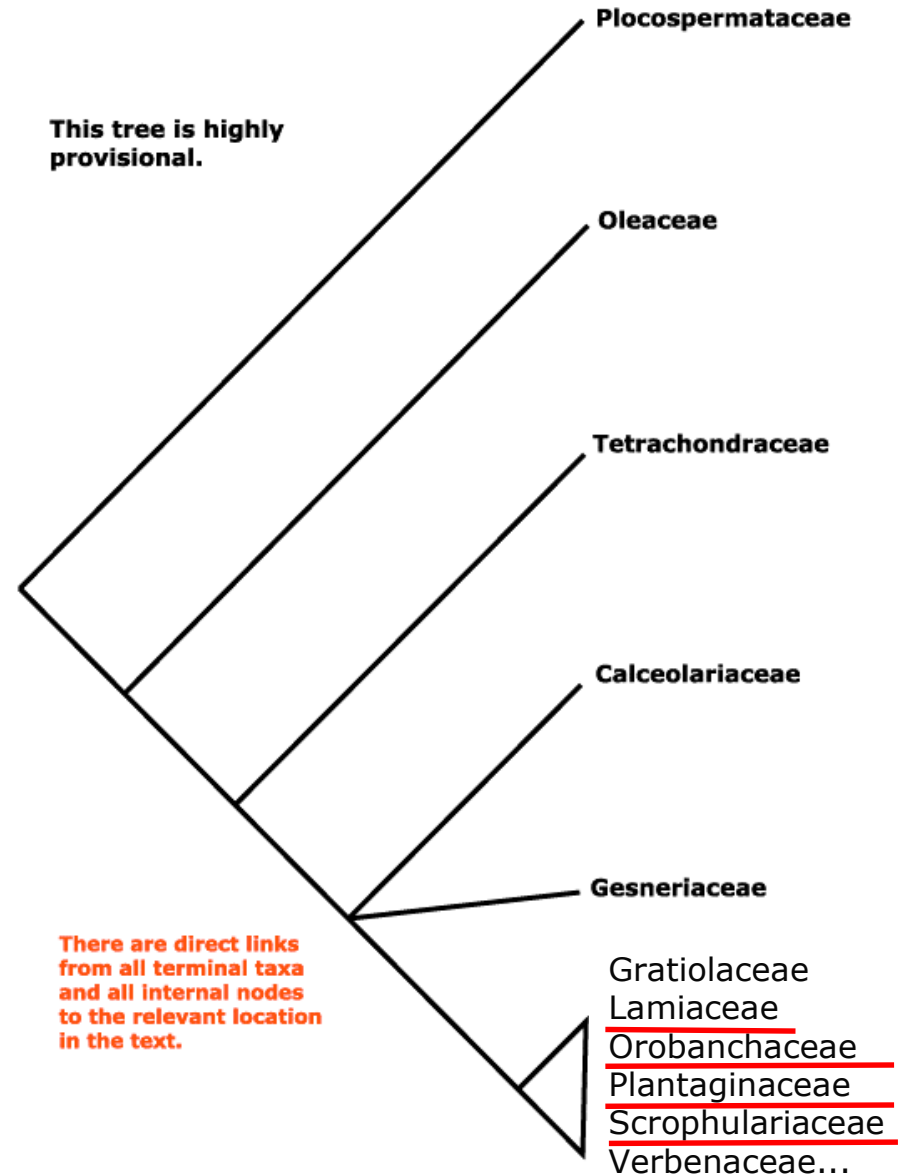
There are direct links from all terminal taxa and all internal nodes to the relevant page of the characterizations.

Tree icons link to or will link to tree for each order.

[Link to Model Organism Tree](#)



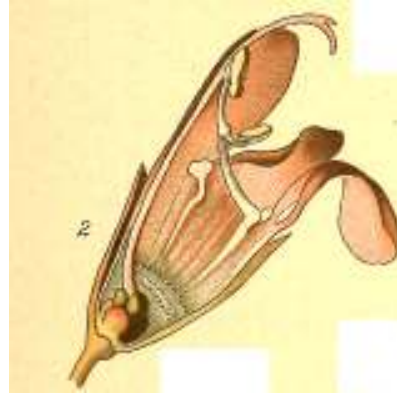
This tree is highly provisional.



There are direct links from all terminal taxa and all internal nodes to the relevant location in the text.

Lamiales, *Lamiaceae*

♂ ↓ K(5) [C(2+3) A2+2] G(2)



Lamiales, Lamiaceae

Ajugoideae

- plody se 4 štěrbínami
- čnělka nevytrvává



Ajuga reptans



Scutellarioideae

- výrůstek na K



Scutellaria galericulata

Teucrium scordium

Salvia pratensis

Nepetoideae

- gynobazická čnělka
- hexakolpátní pyl
- silně vonné terpenoidy



Glechoma hederacea



Mentha arvensis



Thymus pulegioides

Lamiales, Lamiaceae

Lamioideae

- gynobazická čnělka
- trikolpátní pyl



*Lamium
galeobdolon*



Lamium album



Dracocephalum



Galeopsis speciosa



Stachys palustris

*Lamium
amplexicaule*

Lamiales, Scrophulariaceae (incl. Plantaginaceae p.p., Orobanchaceae p.p.)

ǎ ↓ K(4-5) [C(2+3) A5-2] G(2)

koruna:

tlamatá



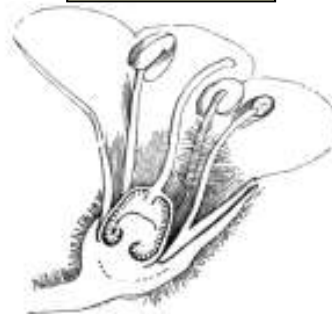
Rhinanthus

šklebivá



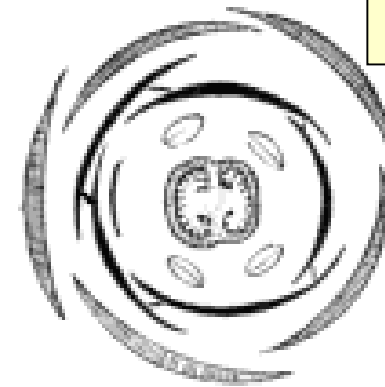
Scrophularia

kolovitá



Verbascum

Scrophularia



Verbascum



Lamiales, Scrophulariaceae (incl. Plantaginaceae p.p., Orobanchaceae p.p.)

Scrophulariaceae s.s.



Verbascum lychnitis



Scrophularia nodosa

Orobanchaceae



Melampyrum pratense



Euphrasia stricta



Melampyrum nemorosum



Rhinanthus serotinus



Pedicularis palustris

Lamiales, Scrophulariaceae (incl. *Plantaginaceae* p.p., *Orobanchaceae* p.p.)



Linaria vulgaris



Digitalis purpurea

Plantaginaceae



Veronica arvensis



Veronica beccabunga



Veronica officinalis



Veronica chamaedrys

Antirrhinum majus

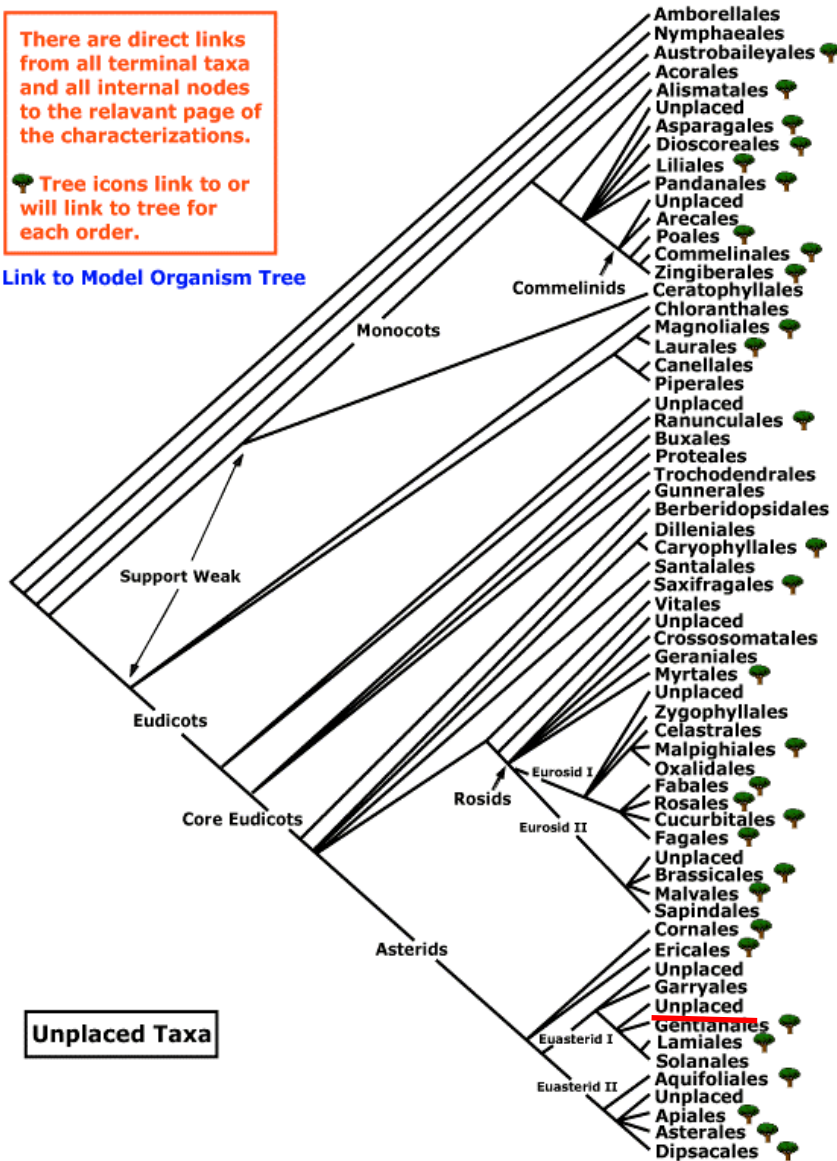


Boraginaceae

There are direct links from all terminal taxa and all internal nodes to the relevant page of the characterizations.

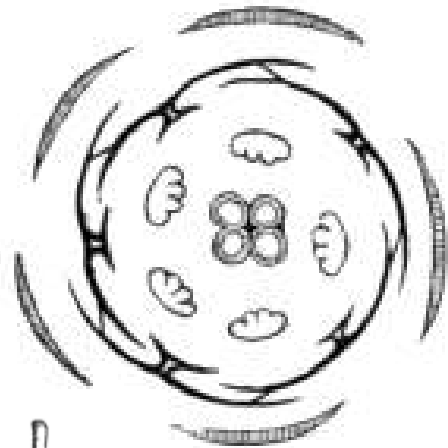
Tree icons link to or will link to tree for each order.

[Link to Model Organism Tree](#)



Boraginaceae

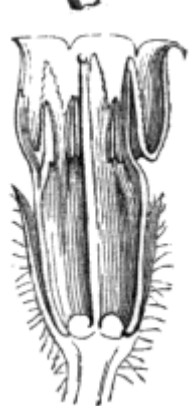
ř * K(5) [C(5) A5] G(2)



**gynobazická
čnělka**



boragoid



fornices



4 tvdky

Boraginaceae



Echium vulgare



Anchusa officinalis



Pulmonaria obscura



Echium wildpretii



Symphytum officinale



Myosotis sylvatica



Lithospermum purpurocaeruleum

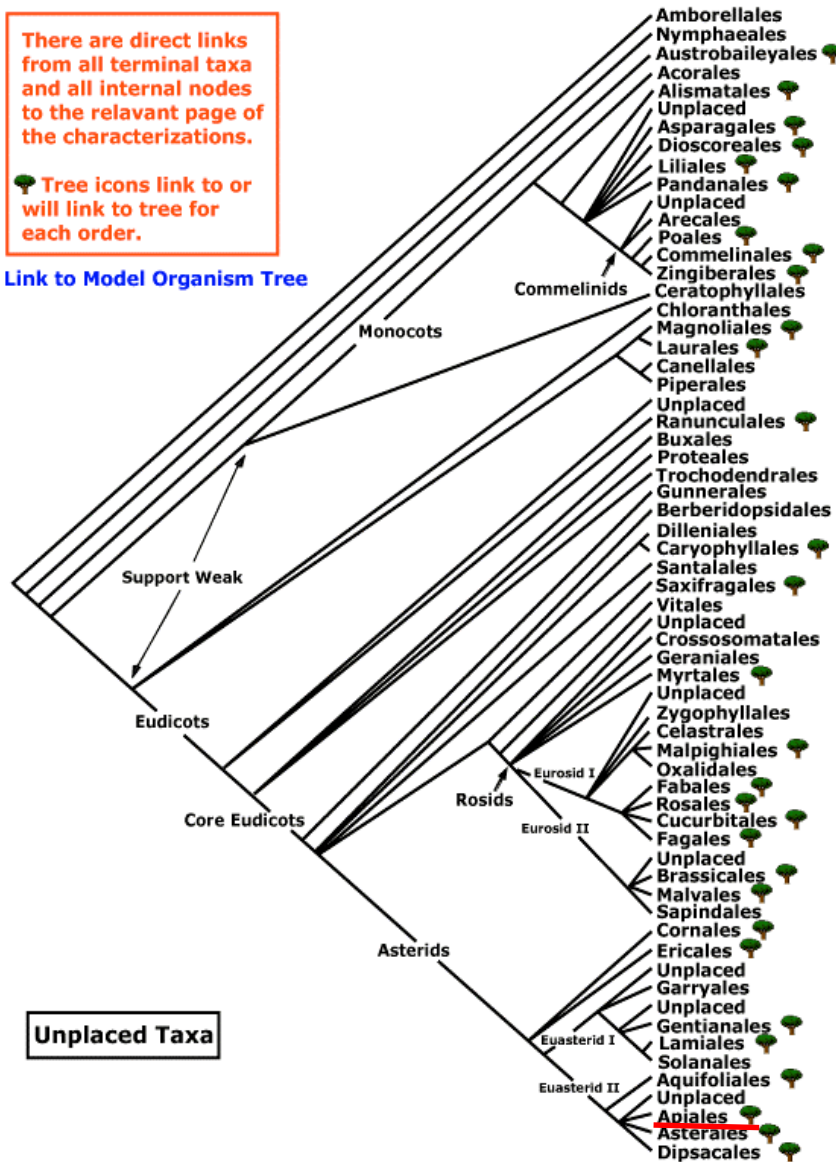


Apiales, Apiaceae

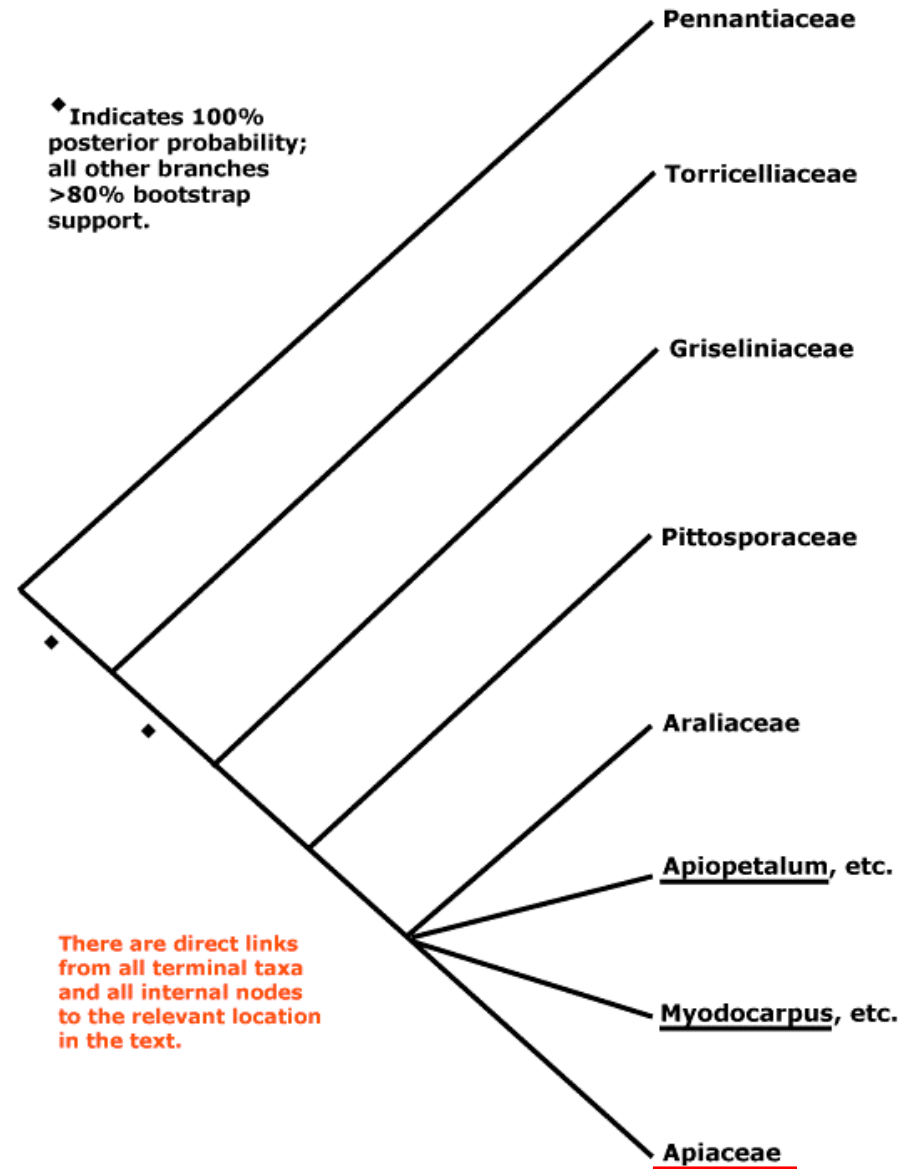
There are direct links from all terminal taxa and all internal nodes to the relevant page of the characterizations.

Tree icons link to or will link to tree for each order.

[Link to Model Organism Tree](#)



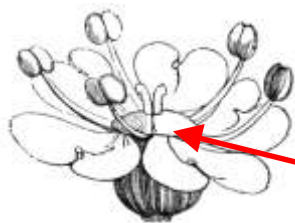
♦ Indicates 100% posterior probability; all other branches >80% bootstrap support.



There are direct links from all terminal taxa and all internal nodes to the relevant location in the text.

Apiales, *Apiaceae*

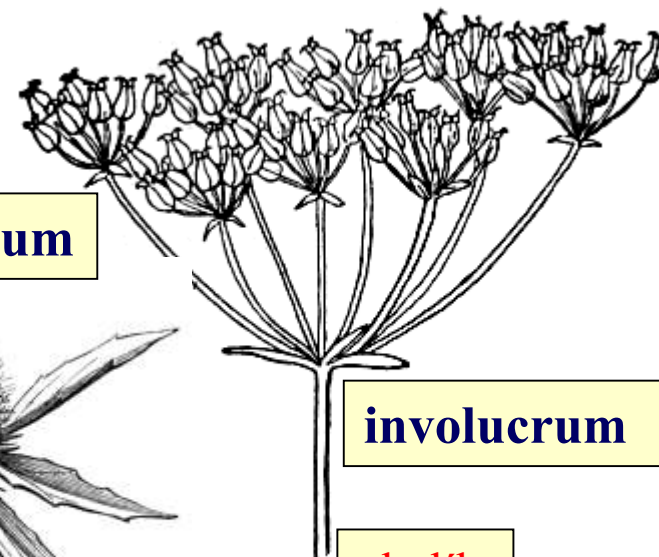
ř * K5 C5 A5 G(2-5)



discus epigynus



involucellum

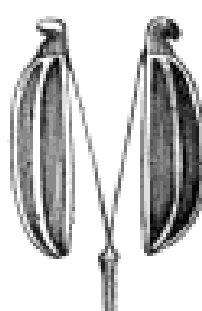


involucrum

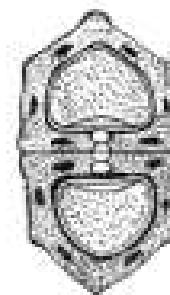
okolík



strboul



diachenium



žebra



Apiales, *Apiaceae*

Saniculoideae

-květy ve strboulech



Astrantia major



Sanicula europaea

Apioideae

- složené okolíky



Aegopodium podagraria



Heracleum mantegazzianum



Anthriscus sylvestris



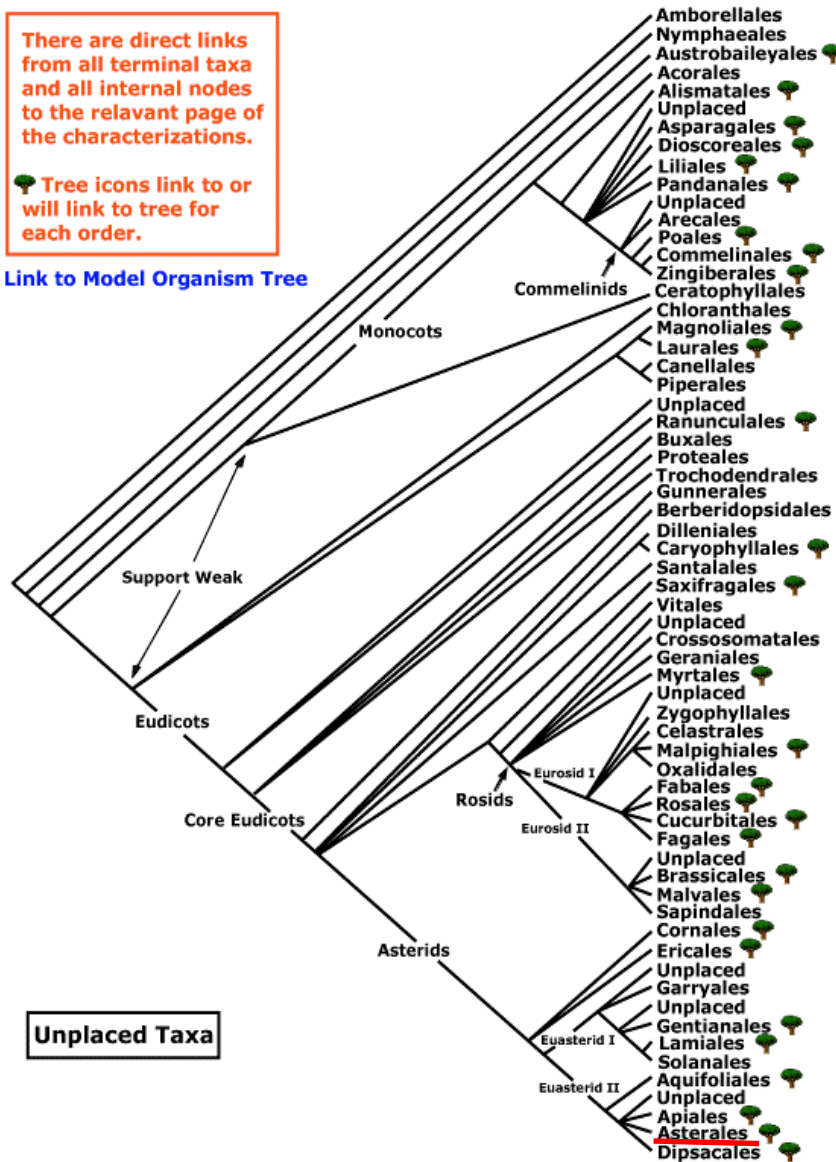
Oenanthe aquatica

Asterales, Asteraceae

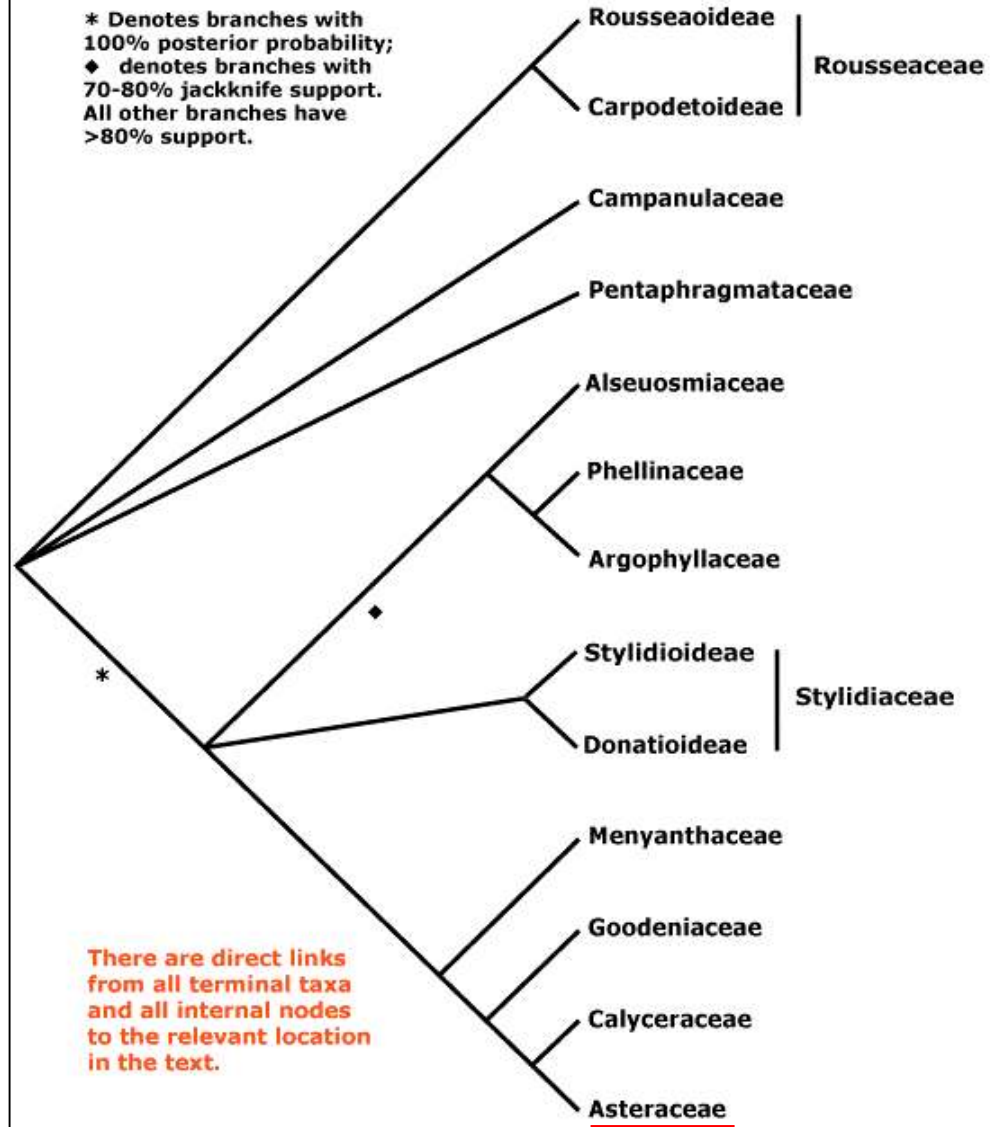
There are direct links from all terminal taxa and all internal nodes to the relevant page of the characterizations.

Tree icons link to or will link to tree for each order.

[Link to Model Organism Tree](#)

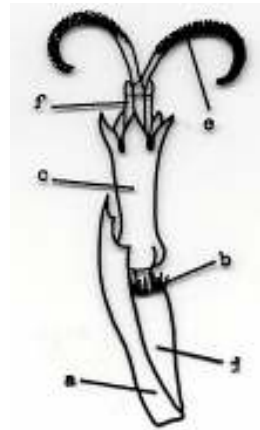


* Denotes branches with 100% posterior probability;
 ◆ denotes branches with 70-80% jackknife support.
 All other branches have >80% support.

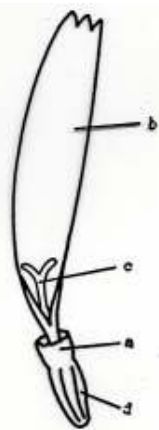


There are direct links from all terminal taxa and all internal nodes to the relevant location in the text.

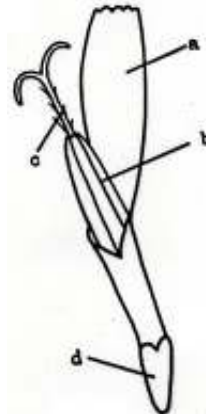
Asterales, Asteraceae



Helianthus annuus
oboupohlavný květ
trubkovitý
a - plevka
b - kalich
(přeměněný)
c - koruna
d - spodní semeník
e - dvouramenná
blizna
f - prašníky



Leucanthemum vulgare
samičí květ jazykovitý
a - kalich (límečkovitý)
b - jazykovitá koruna
c - čnělka s bliznou
d - spodní semeník

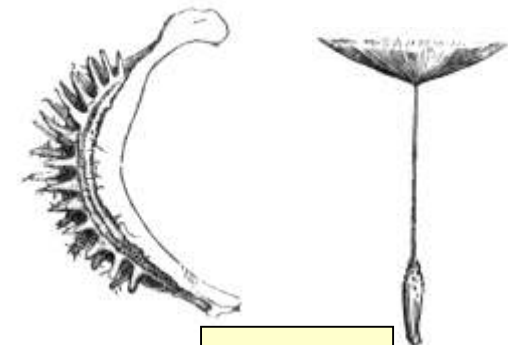


Cichorium intybus
oboupohlavný květ
jazykovitý
a - jazzykovitá koruna
b - prašníky
c - čnělka s vymetacími
trichomy
d - spodní semeník

ř */↓ K ∞ [C(5) A(5)] G(2)

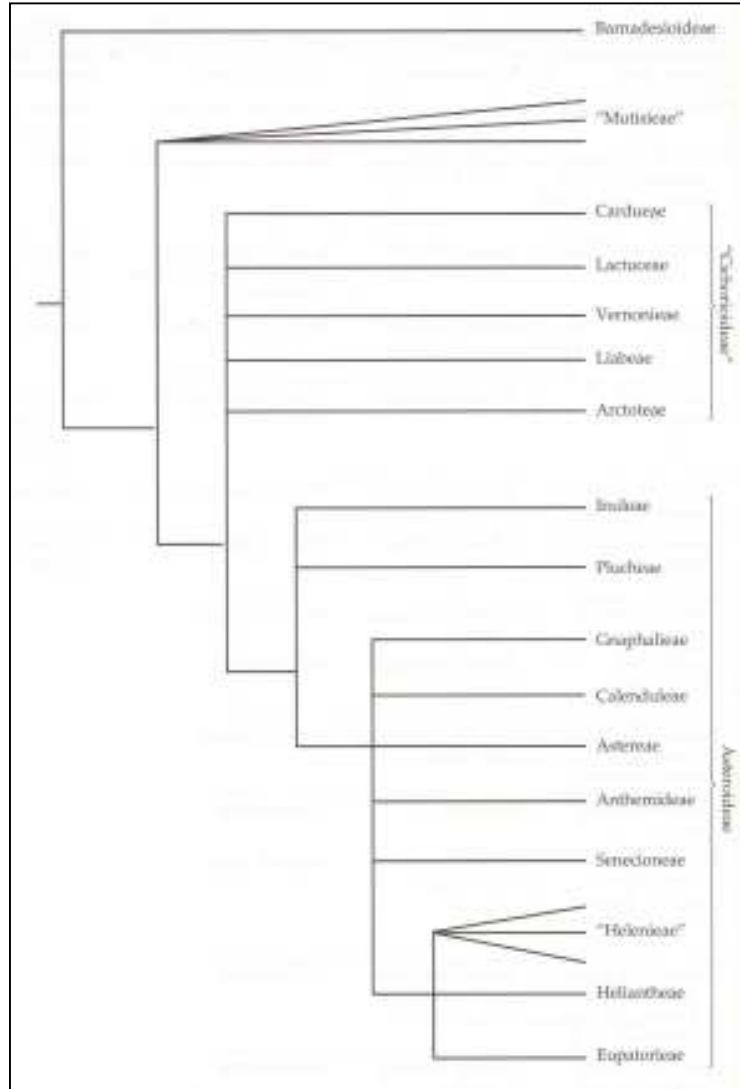


úbor – anthodium
zákrov - involucrum



nažka

Asterales, Asteraceae



- dřeviny J Ameriky
- chybí chloroplastová inverze

- blizna na vnitřní straně čnělkových ramen
- úbory homogamické (diskoidní či jazykovité)
- mléčnice i pryskyřičné kanálky

- blizna ve 2 okrajových liniích na čnělkových ramenech
- úbory heterogamické
- mléčnice chybí

Asterales, Asteraceae, Cichorioideae

- blizna na vnitřní straně čnělkových ramen
- úbory homogamické (diskoidní či jazykovité)
- mléčnice i pryskyřičné kanálky

Cardueae (=Cynareae)

- květy trubkovité (hluboce dělené)
- listy členěné
- ostnité
- 83 / 2 500



*Carduus
acanthoides*



Cirsium arvense



Centaurea scabiosa

Lactuceae (=Cichorieae)

- květy jazykovité
- hodně vyvinuté mléčnice
- 100 / 1 550



*Hieracium
aurantiacum*



Tussilago farfara



Cichorium intybus



Taraxacum



Petasites hybridus

Asterales, Asteraceae, Asteroideae

- blizna ve 2 okrajových liniích na čnělkových ramenech
- úbory heterogamické
- mléčnice chybí

Astereae

- úbory heterogamické
- 170 / 2 800



*Aster
linosyris*



*Solidago
gigantea*

Anthemideae

- úbory heterogamické
- listy dělené
- zákrov s blanitým lemem
- chmýr redukovaný (šupiny)
- 110 / 1 750



Achillea millefolium



Anthemis tinctoria



*Bellis
perennis*



*Tanacetum
vulgare*

Senecioneae

- úbory heterogamické
- zákrov jednořadý
- 120 / 3 200



*Senecio
ovatus*