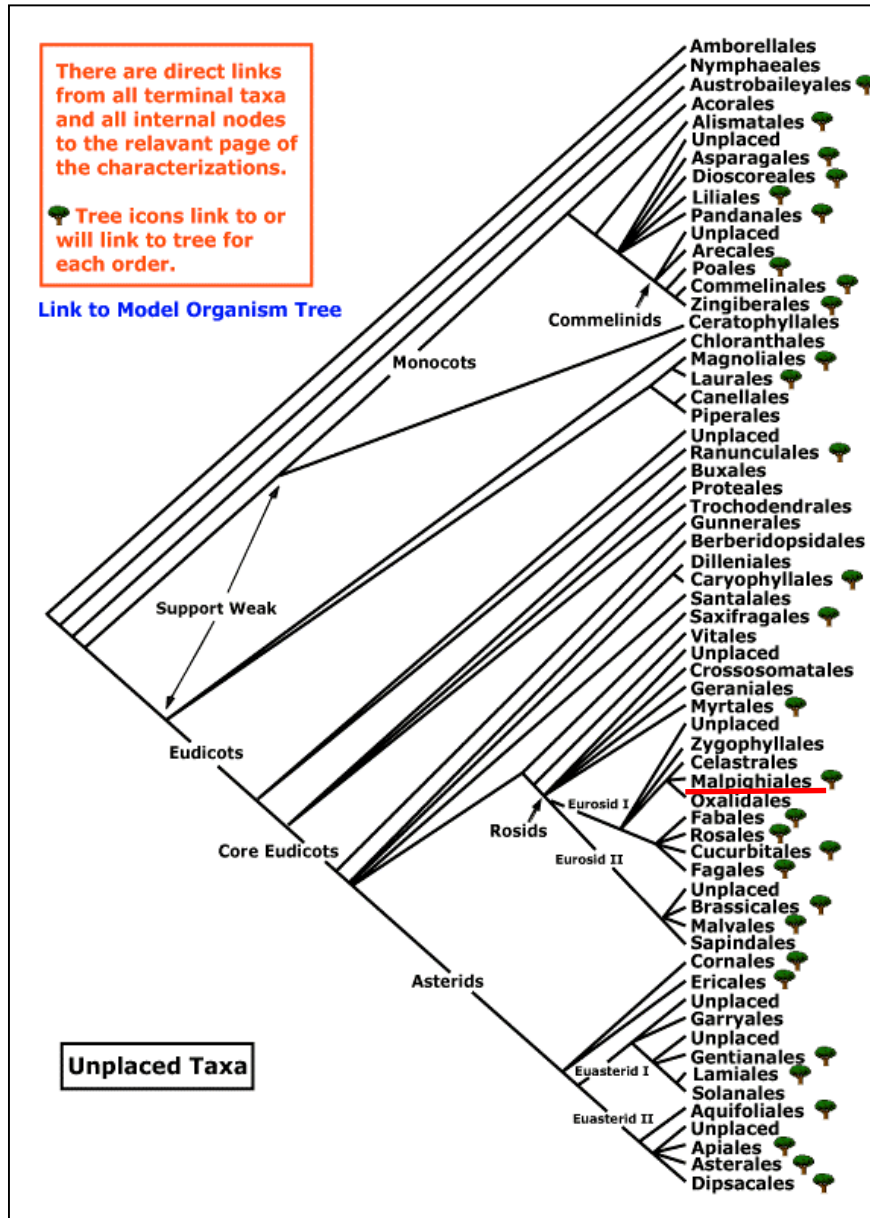


Malpighiales, Violaceae

There are direct links from all terminal taxa and all internal nodes to the relevant page of the characterizations.

Tree icons link to or will link to tree for each order.

[Link to Model Organism Tree](#)

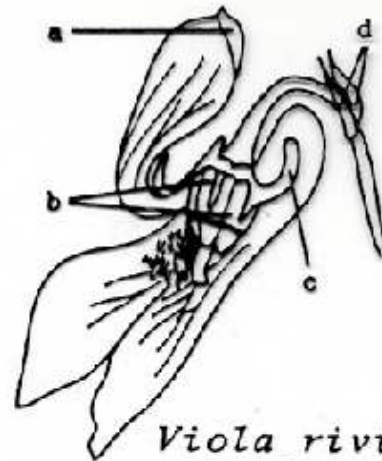


Malpighiales, Violaceae

ř ↓ K5 C5 A5 G(3)



Viola odorata
květní diagram



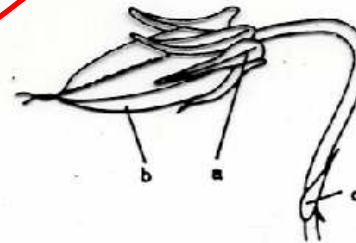
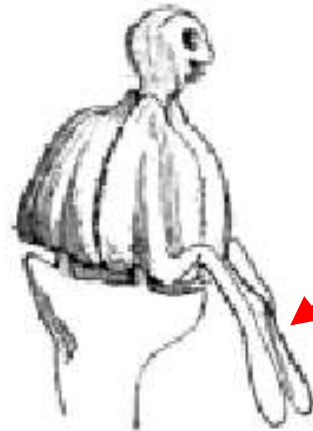
Viola riviniana
květ (květní obal
zčásti odstraněn)
a - korunní lístek
b - tyčinky
c - nektarium
d - listence



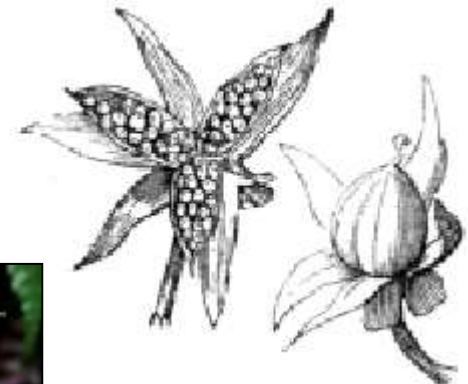
Viola tricolor
Violaceae
© G. D. Carr



Viola tricolor
Violaceae
© G. D. Carr



Viola riviniana
tobolka
a - kalich
b - tobolka
c - listence



Malpighiales, Violaceae



Viola odorata



Viola riviniana



*Viola
canescens*



Viola hirta



Viola biflora



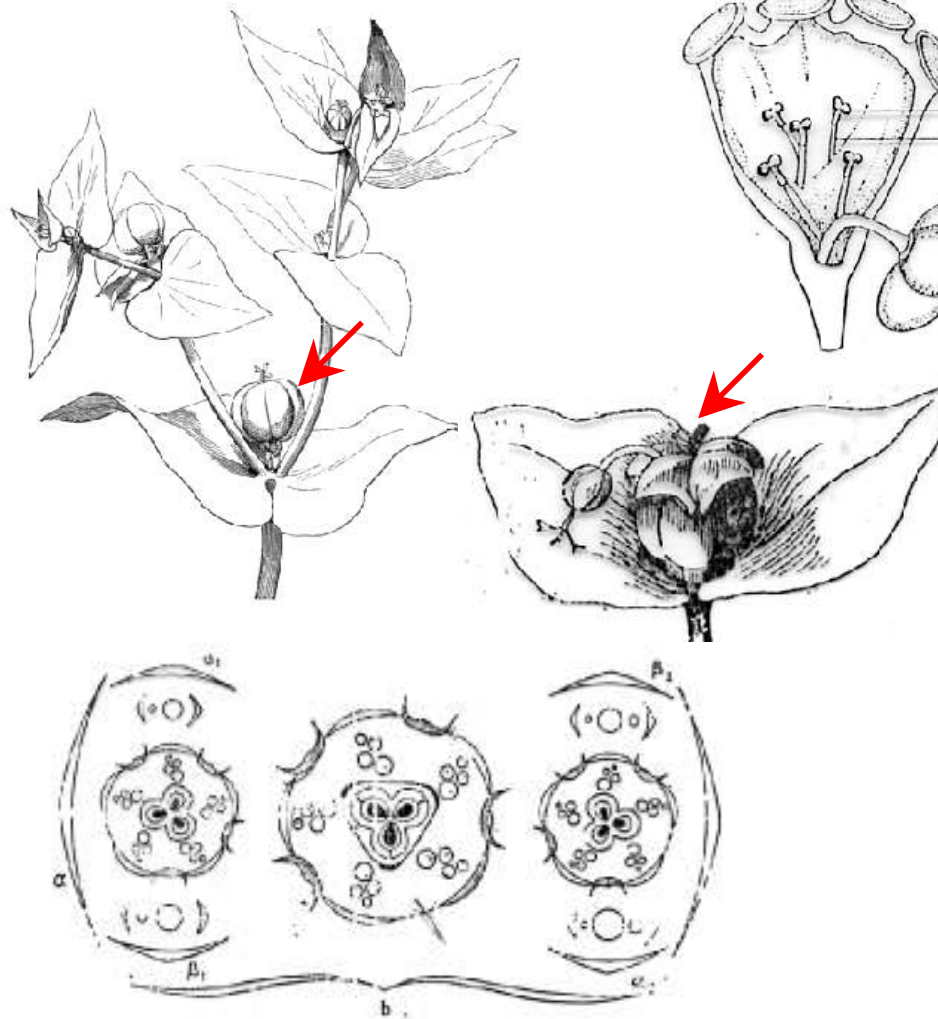
*Viola
tricolor*

Malpighiales, Euphorbiaceae

♂ * K0-6 C0-6 A1-∞

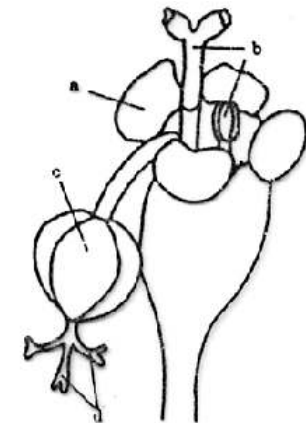
♀ * K0-6 C 0-6 G(3)

- mléčnice, často jedovaté
- někdy cyathia



Euphorbia helioscopia
schema cyathia

- žlázky
- samčí květy (jednotlivé tyčinky)
- květní stopky samčích květů
- samiččí květ



Euphorbia helioscopia
cyathium
a - žláзка
b - tyčinky
c - semeník
d - blizny

Obr. 251. Diagram květenství prýce okrouhlého, *Euphorbia peplus*: δ - podpurný listev oproti levého cyathia, α β - jeho listence, v jejichž paždí vyrůstají boční cyathia, α₁ β₁ - listence levého, α₂ β₂ - listence pravého cyathia. (Del. V. Orszáková.)

Malpighiales, Euphorbiaceae

Euphorbioideae

- tricolporátní pyl
- latex (bílý, často lepkavý)
- často cyathium



*Euphorbia
cyparissias*



*Euphorbia
helioscopia*



Euphorbia palustris



Euphorbia milii



Euphorbia pulcherrima

Malpighiales, Euphorbiaceae

Mercurialis annua



Foto: Jan Thomas Johansson

*Mercurialis
perennis*



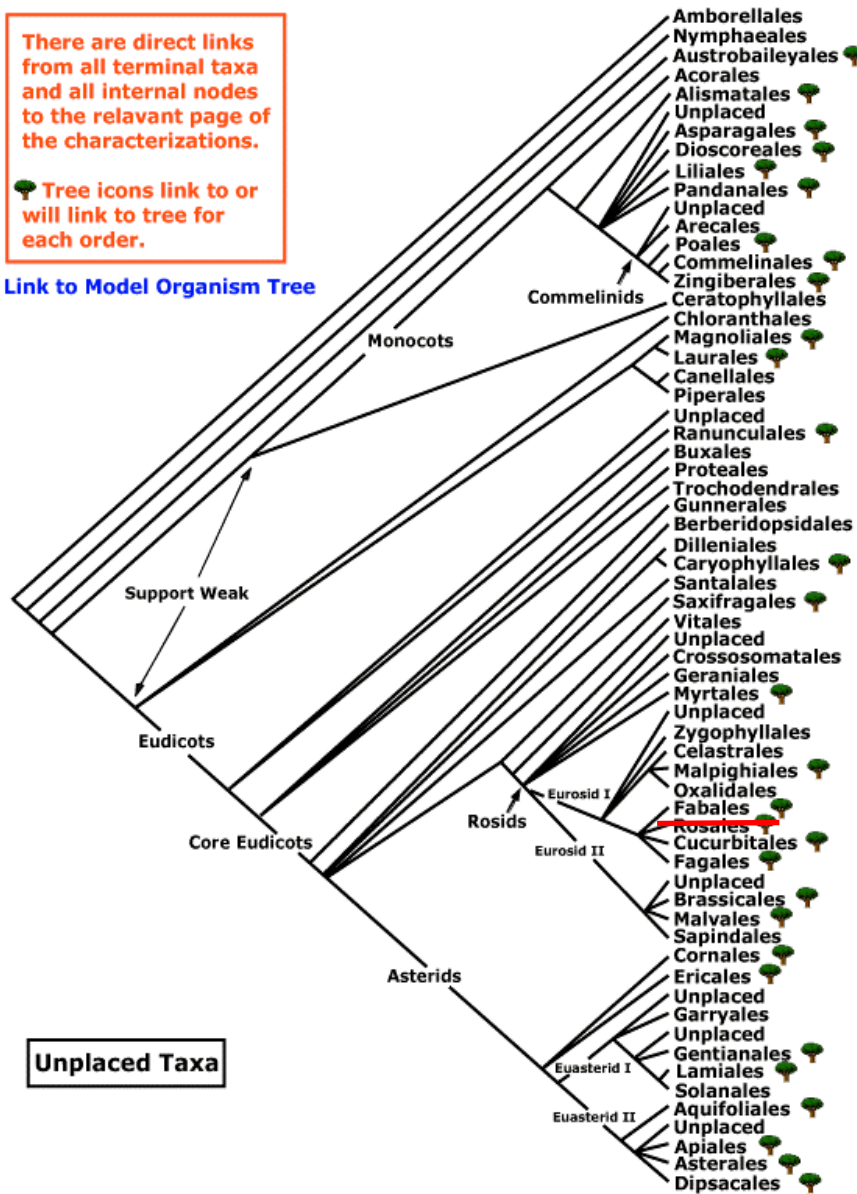
Foto: Anna-Lena Anderberg

Fabales

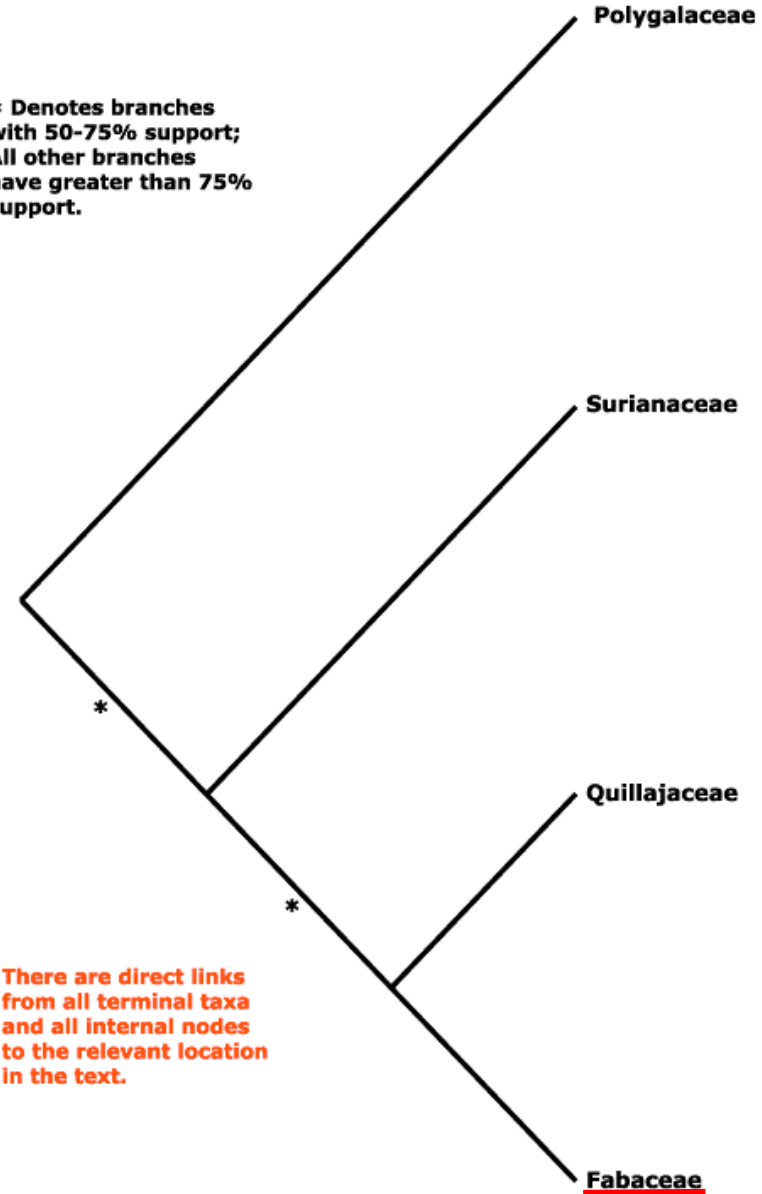
There are direct links from all terminal taxa and all internal nodes to the relevant page of the characterizations.

Tree icons link to or will link to tree for each order.

[Link to Model Organism Tree](#)



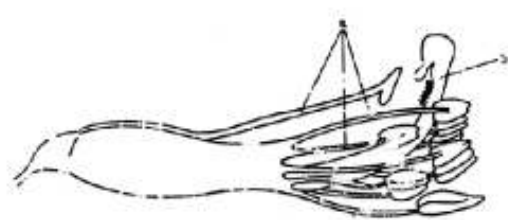
* Denotes branches with 50-75% support; All other branches have greater than 75% support.



There are direct links from all terminal taxa and all internal nodes to the relevant location in the text.

Fabales, Fabaceae

ř ↓ K(5) C5 A(9)+1 G(1) ř ↓ K(5) C5 A(10) G(1)



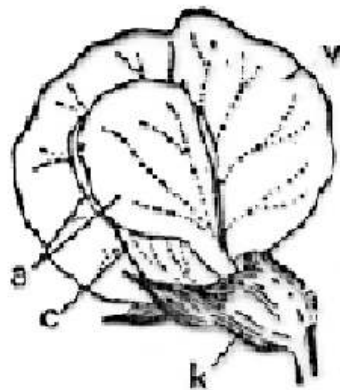
Colutea arborescens
dvoubratré tyčinky
a - tyčinky; b - čnělka s bliznou



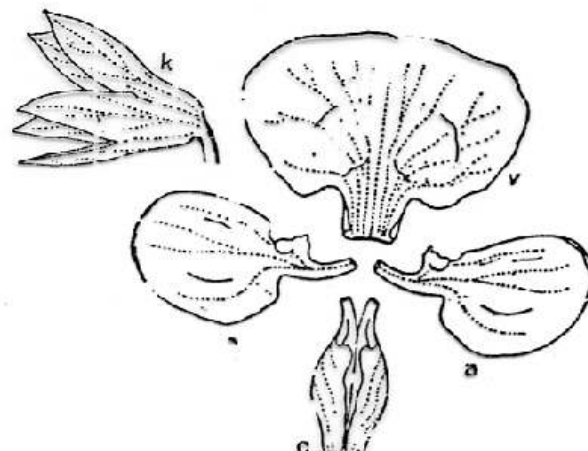
Genista tinctoria
srostlé tyčinky (jednobratré)
a - tyčinky; b - čnělka s bliznou



Typová šou
Fabaceae
© G. D. Carr



Pisum sativum
květ a rozbor květu
v - pavéza; a - křídla; c - šlunek; k - srostlý kalich



Fabales, Fabaceae



Ulex europaeus



Lupinus polyphylus



Lathyrus vernus



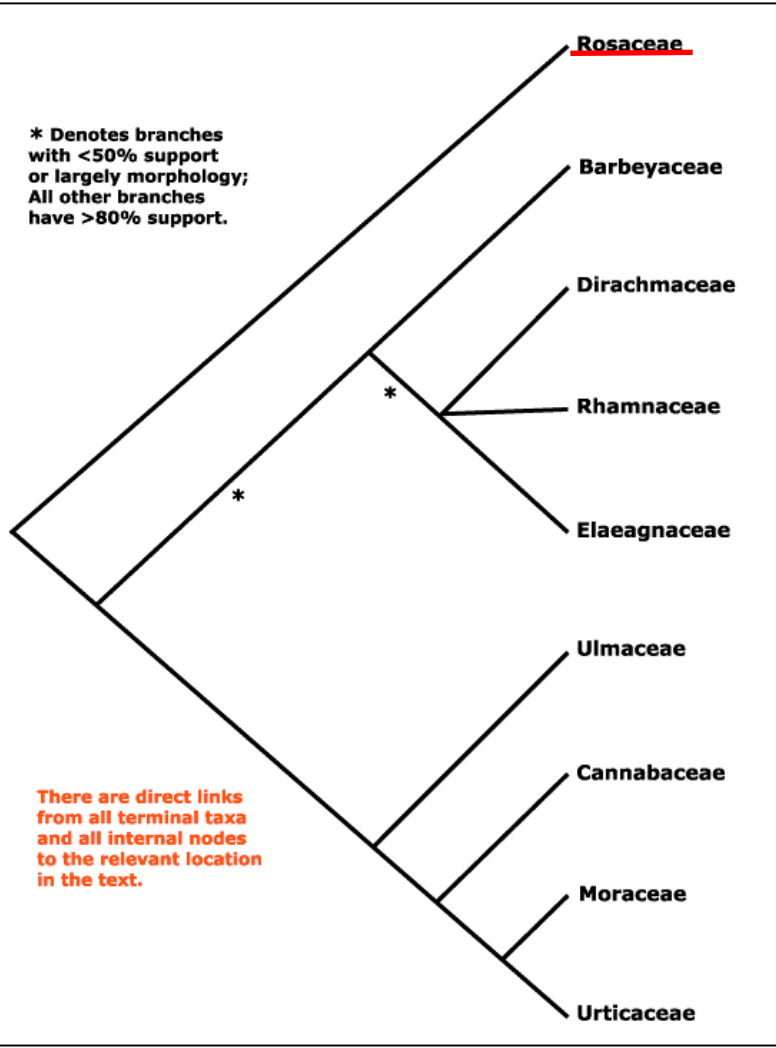
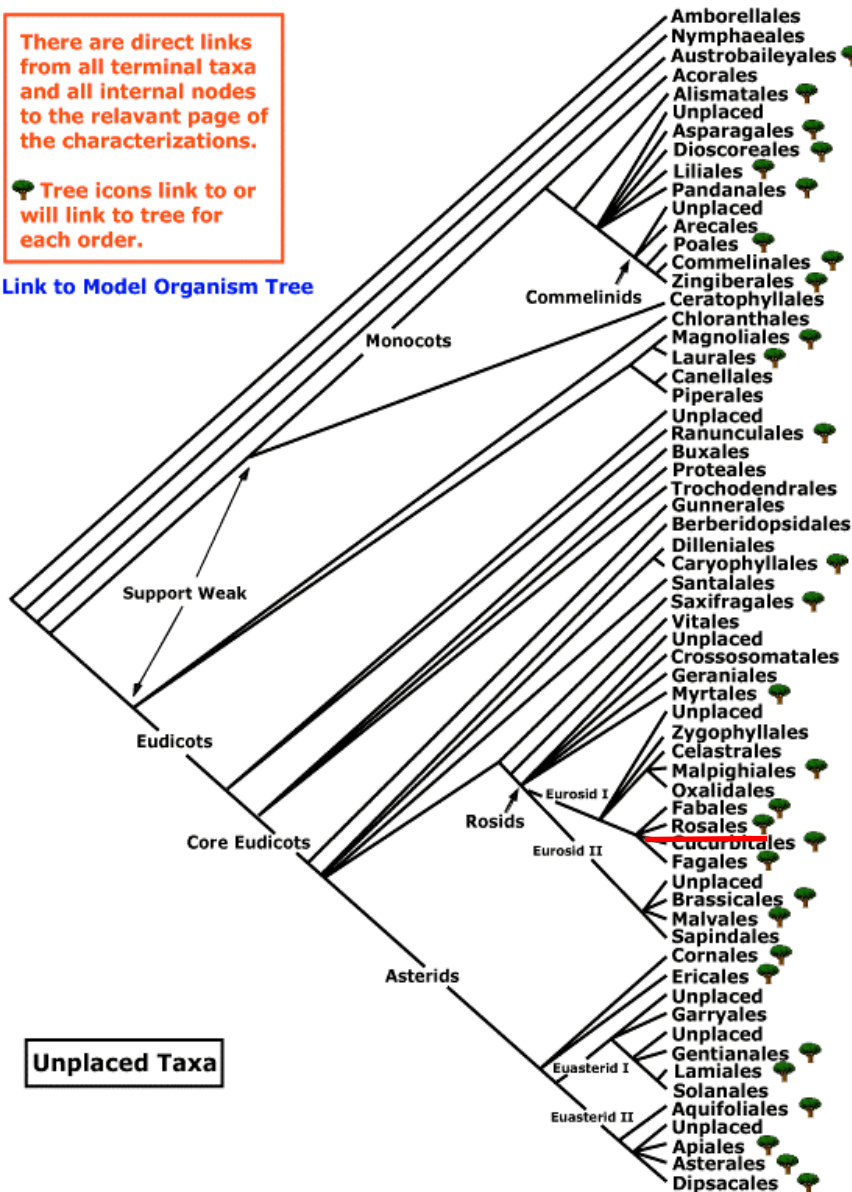
Trifolium pratense

Rosales

There are direct links from all terminal taxa and all internal nodes to the relevant page of the characterizations.

Tree icons link to or will link to tree for each order.

[Link to Model Organism Tree](#)

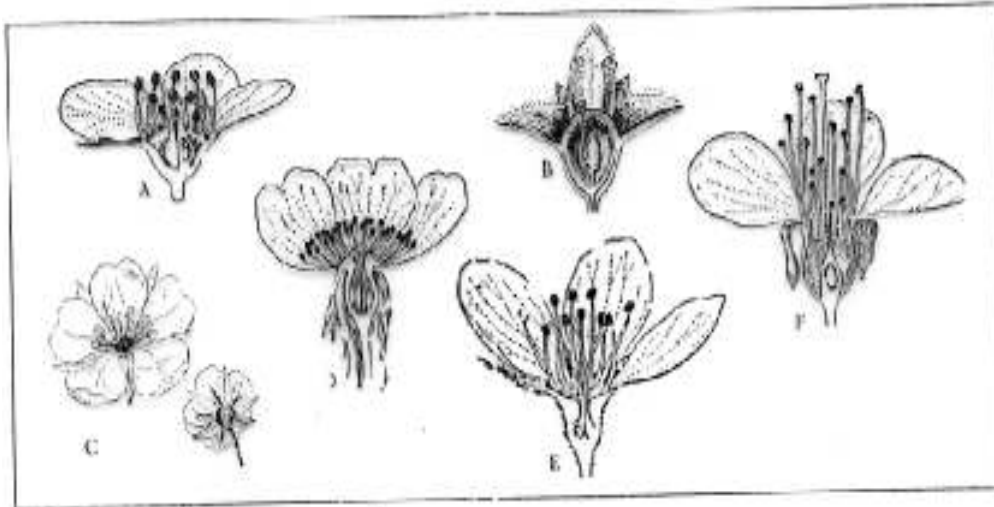


* Denotes branches with <50% support or largely morphology; All other branches have >80% support.

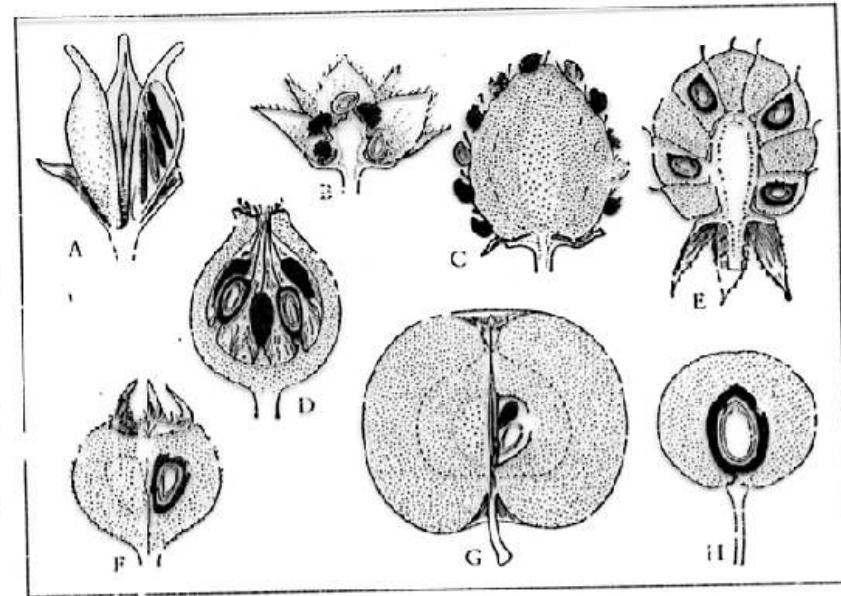
There are direct links from all terminal taxa and all internal nodes to the relevant location in the text.

Rosales, Rosaceae

ř * k5 K5 C5 A10-∞ G1-∞



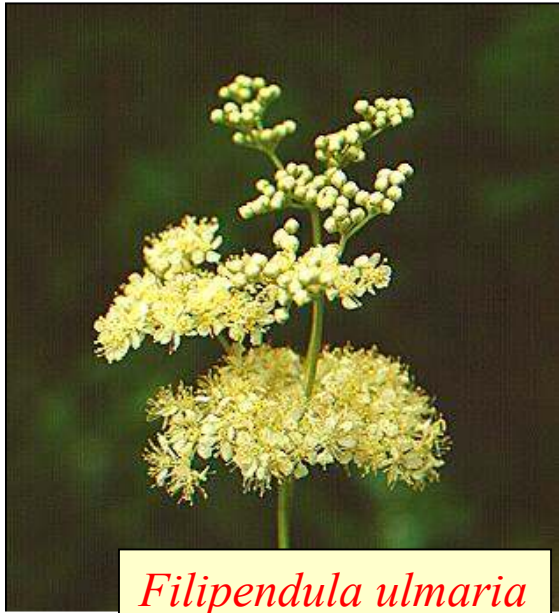
Průřezy květy u Rosaceae s. l.
 A - *Spiraea* sp.; B - *Alchemilla* sp.; C - *Potentilla argentea*,
 naspodu kalich a kalíšek; D - *Rosa canina*; E - *Pyrus communis*;
 F - *Cerasus avium*.



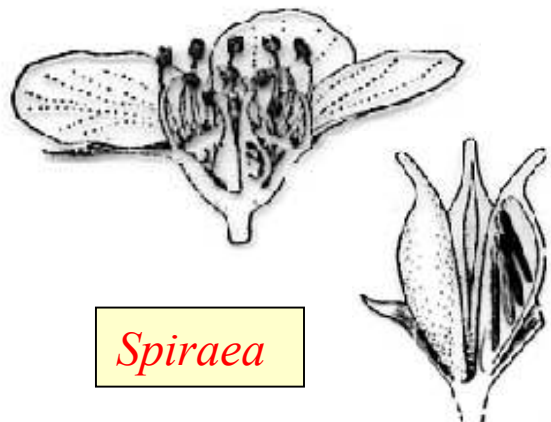
Typy plodů u Rosaceae s. l.
 A - *Spiraea* (mehýžek)
 B - *Potentilla* (nažka)
 C - *Fragaria* (souplodí
 nažek)
 D - *Rosa*
 E - *Rubus* (souplodí
 peckoviček)
 F - *Mespilus*
 G - *Malus* (malvice)
 H - *Prunus* (peckovice)

Rosales, Rosaceae

„*Spiraeoideae*“ (polyfyletické)
- plod měchýřek, nažka



Filipendula ulmaria



Spiraea

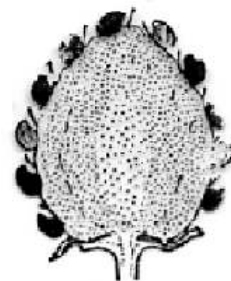
Rosoideae
- G_{∞}
- plod nažka, peckovička



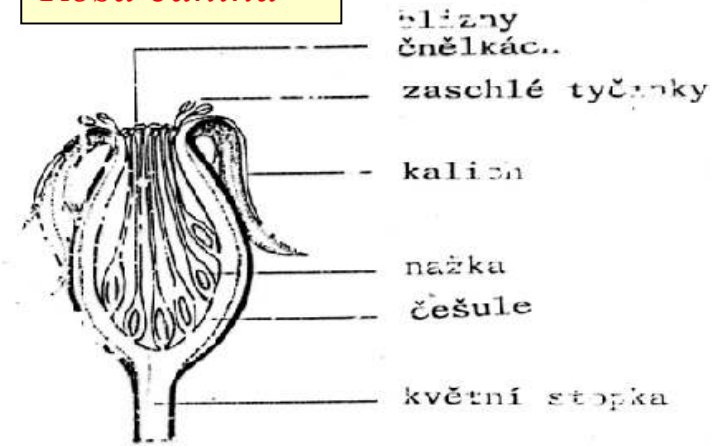
Potentilla erecta



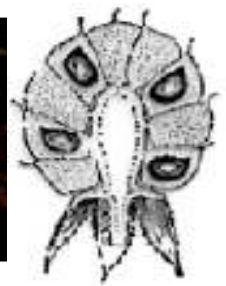
Fragaria



Rosa canina



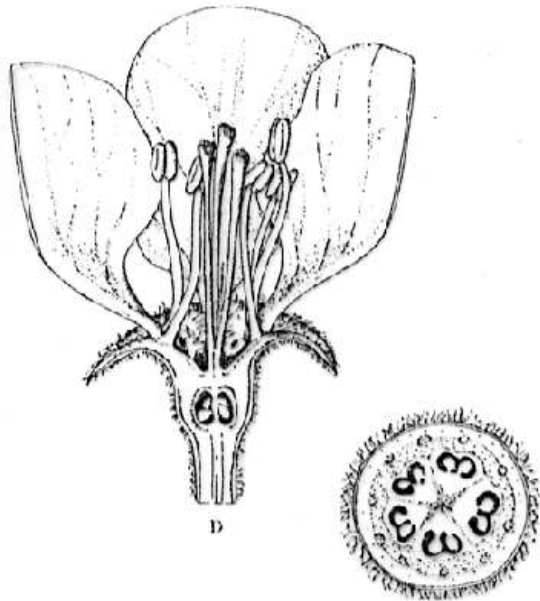
Rubus



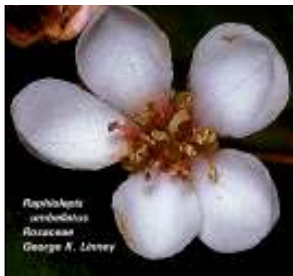
Rosales, Rosaceae

Maloideae

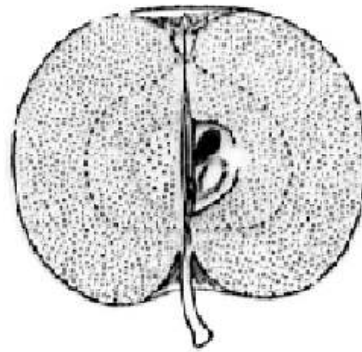
- G(2-5)
- plod malvice



Malus x domestica
 podélný řez květem (D)
 a příčný řez pseudo-
 synkarpním semeníkem (F)



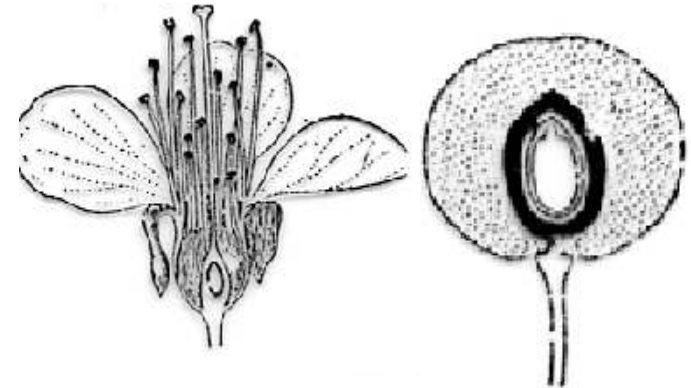
Sorbus aucuparia



Pyrus communis

Amygdaloideae (Prunoideae)

- G1(-5)
- plod peckovice



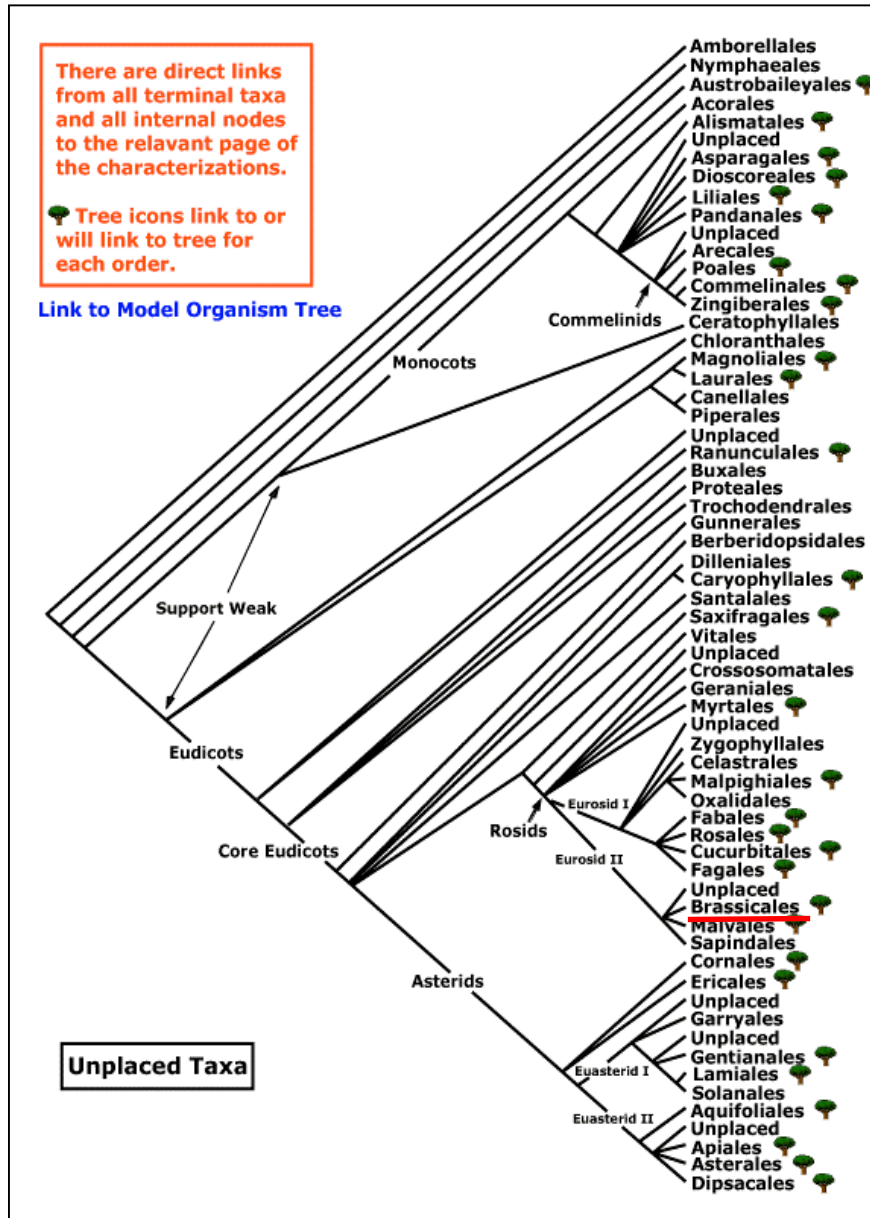
Cerasus

Brassicales

There are direct links from all terminal taxa and all internal nodes to the relevant page of the characterizations.

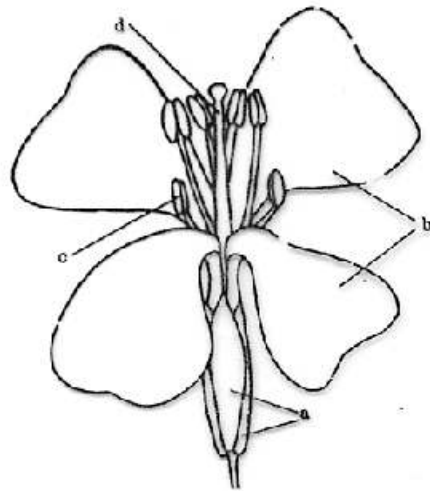
Tree icons link to or will link to tree for each order.

[Link to Model Organism Tree](#)



Brassicales, Brassicaceae

ř * K2+2 C4 A2+4 G(2)

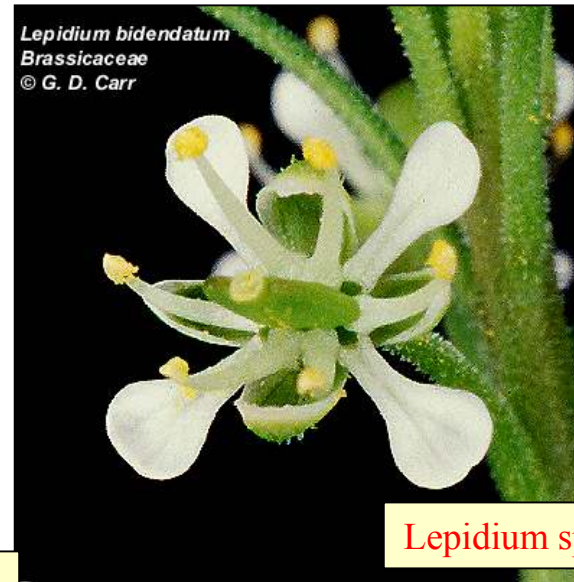


Erysimum repandum
květ

- a - kališní lístky
- b - korunní lístky
- c - tyčinka
- d - čnělka s bliznou



Raphanus sativus



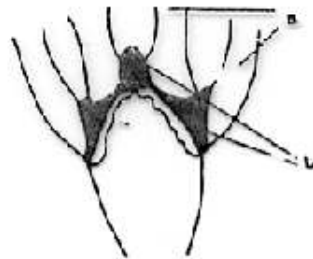
Lepidium sp.



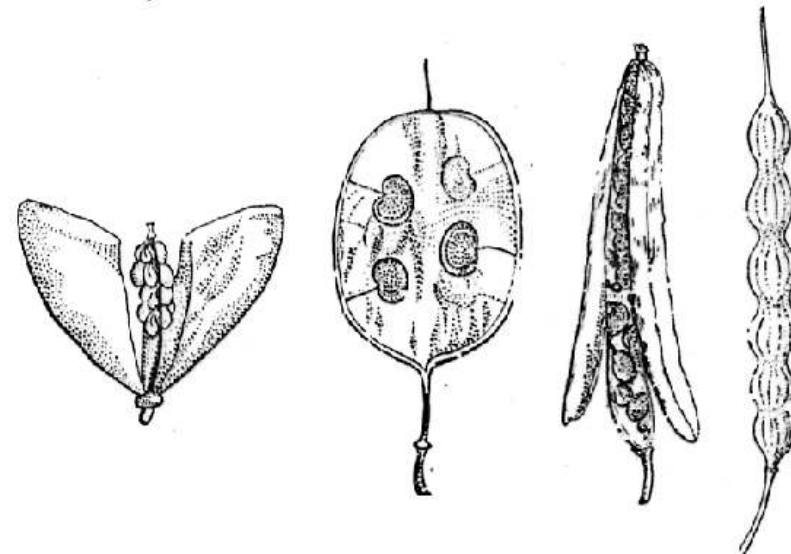
Lepidium bidentatum
Brassicaceae
© G. D. Carr



Brassica oleracea
androecium a gynoecium
(čtyřlaločné tyčinky)
a - tyčinky
b - pestík
c - nektarium



Barbarea vulgaris
nektarium
a - baze tyčinek
b - nektarium



šesulka

šesule

struk

Brassicales, Brassicaceae

Lepidium campestre



Alliaria petiolata



Cardaminopsis arenosa



Cardamine pratensis

Thlaspi arvense



Capsella bursa-pastoris



Lunaria annua

Lunaria rediviva

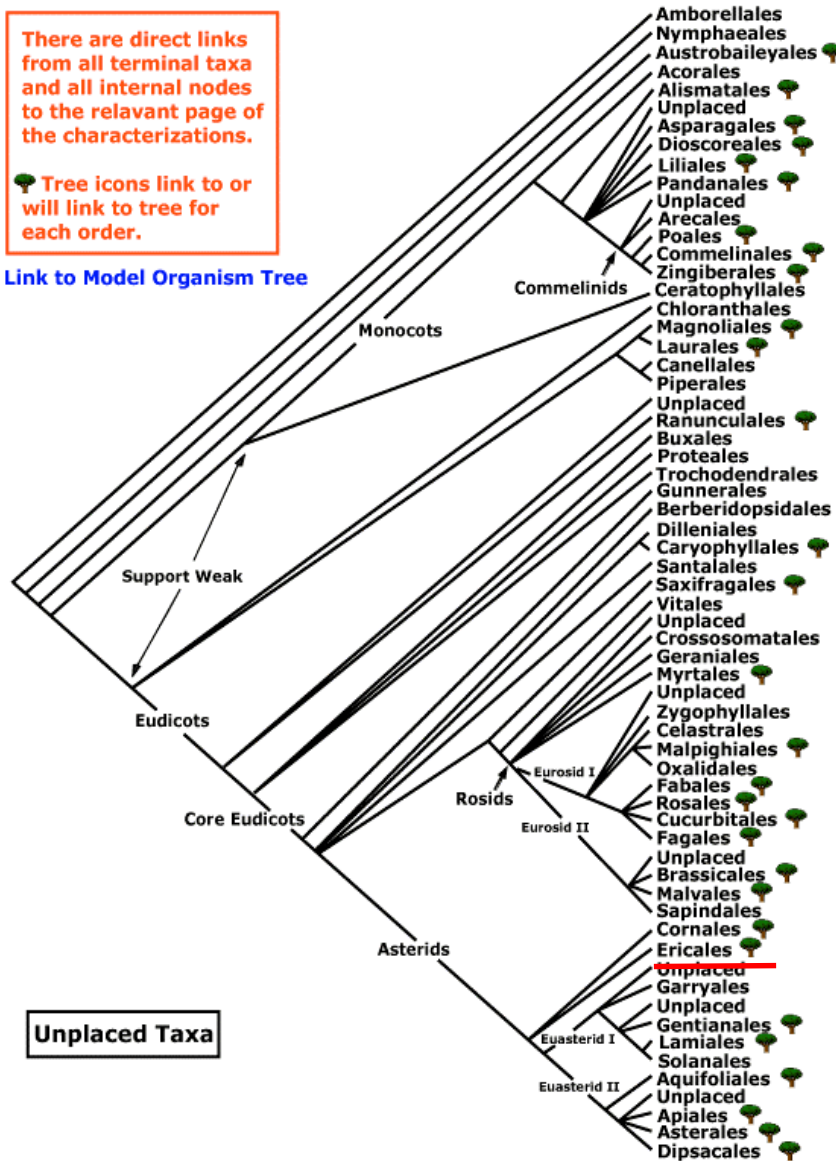


Ericales

There are direct links from all terminal taxa and all internal nodes to the relevant page of the characterizations.

Tree icons link to or will link to tree for each order.

[Link to Model Organism Tree](#)



*Denotes branches with 60-80% support; all other branches have >80% support.

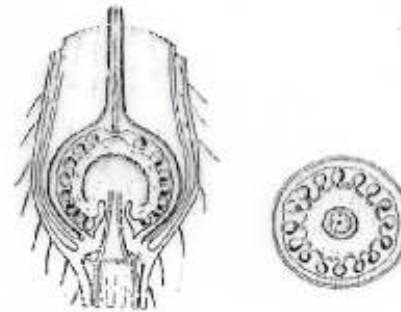


There are direct links from all terminal taxa and all internal nodes to the relevant location in the text.

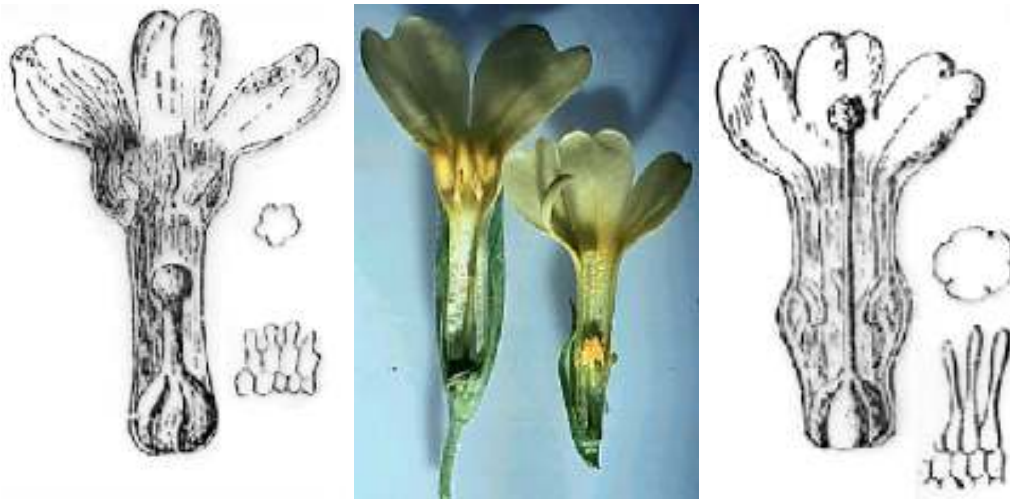
Ericales, Primulaceae

ř * K(5) [C(5) A5] G(5)

Primula elatior
průřez krátkočnělečným
a dlouhoočnělečným květem
u každého zvětšené bliznové
papily a pylová zrna

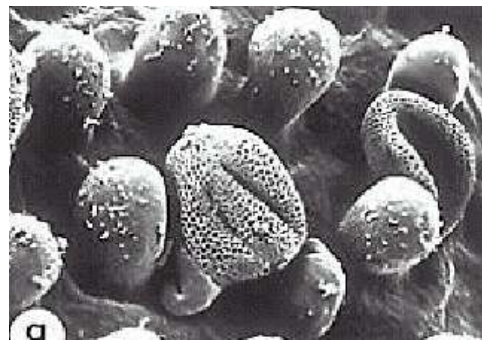
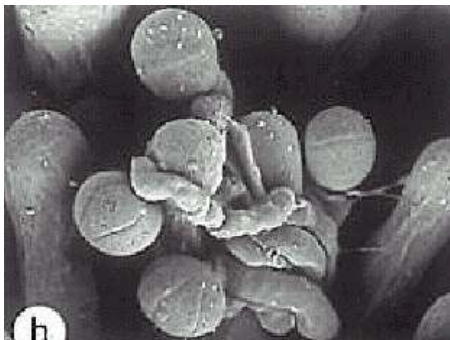


Primula vulgaris
podélný a příčný řez lýčikarpním
gynécem s bazální placentací



Primula auriculata

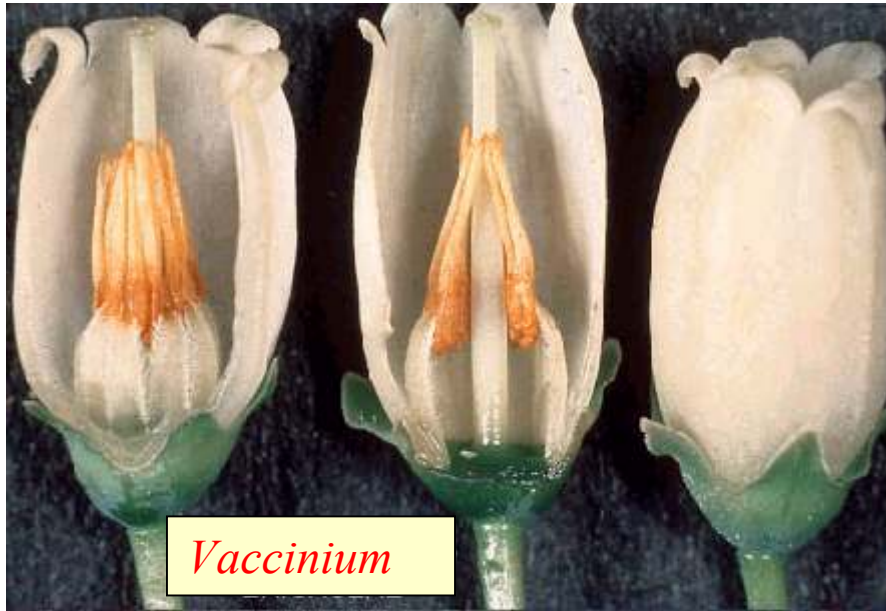
P. acaulis



Anagallis arvensis *Lysimachia nummularia*

Ericales, Ericaceae

ř * K(4-5 [C(4-5) A4-10] G(2-10)



Vaccinium

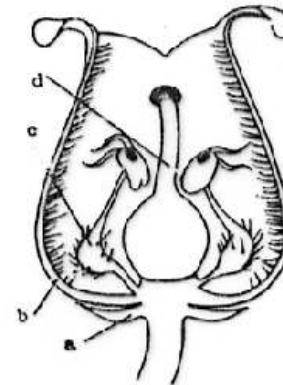


Vaccinium vitis-idaea
květ

- a - spodní semeník
- b - kalich
- c - koruna
- d - čnělka s bliznou



Azalea



Arctostaphylos uva-ursi
podélný řez květem

- a - kalich
- b - koruna
- c - tyčinka
- d - pestík

Arctostaphylos uva-ursi
tyčinka

- a - nitka
- r - prašník
- c - přívěšky prašníku
- d - otvor prašníku



Arbutus

Ericales, Ericaceae

Ericoidní větev

- vytrvávající koruna



Erica tetralix



Calluna vulgaris

Vaccinoidní větev

- G spodní nebo svrchní



Vaccinium vitis-idaea



Oxycoccus palustris



Gaultheria



Andromeda polifolia

Ericales, Ericaceae

Phyllocooidní větev

- septicidní tobolky
- květy pravidelné



Ledum palustre

Rhododendroidní větev

- listeny na bázi květenství
- septicidní tobolky
- květy bilaterální
- lepkavá vlákna u pylu
- bezpřívěskové prašníky



Rhododendron indicum

Empetroidní větev

- větrosprašné
- redukovaná koruna
- čnělka rozšířená, laločnatá
- „peckovice“



Empetrum hermaphroditum