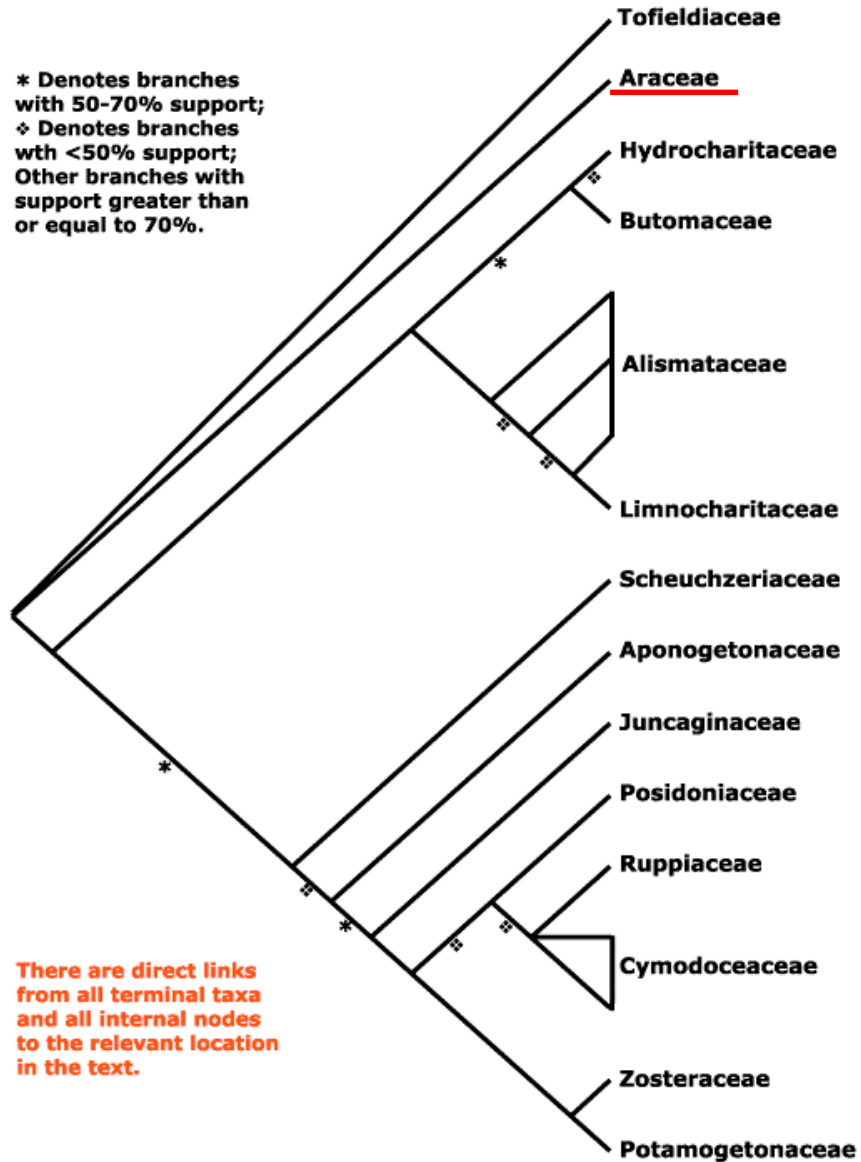


Alismatales

* Denotes branches with 50-70% support;
◇ Denotes branches with <50% support;
Other branches with support greater than or equal to 70%.

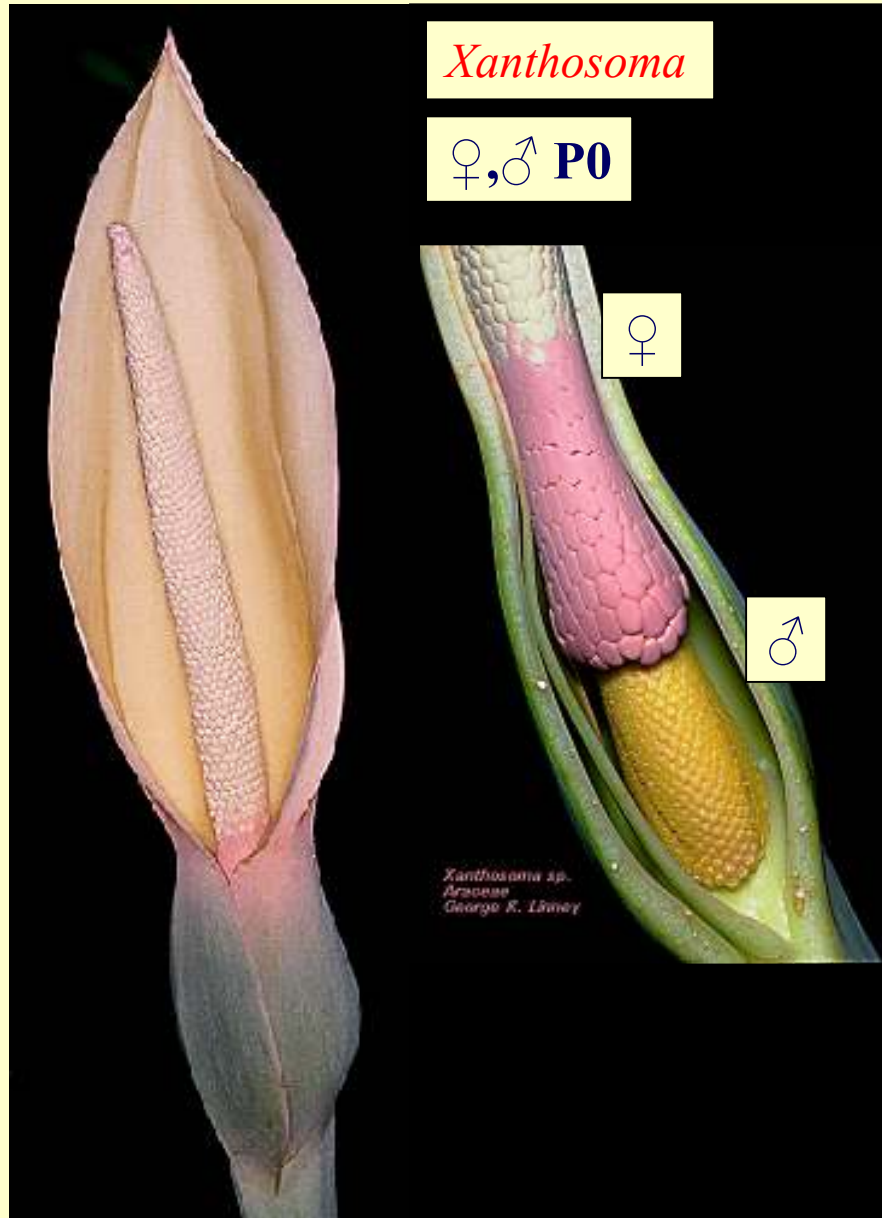


There are direct links from all terminal taxa and all internal nodes to the relevant location in the text.

Alismatales, Araceae

♂ * P6 A2,4,8 G(3)

♀,♂ * P0 A2,4,8 G(3)



Alismatales, Araceae



Arum maculatum



Calla palustris

Asparagales



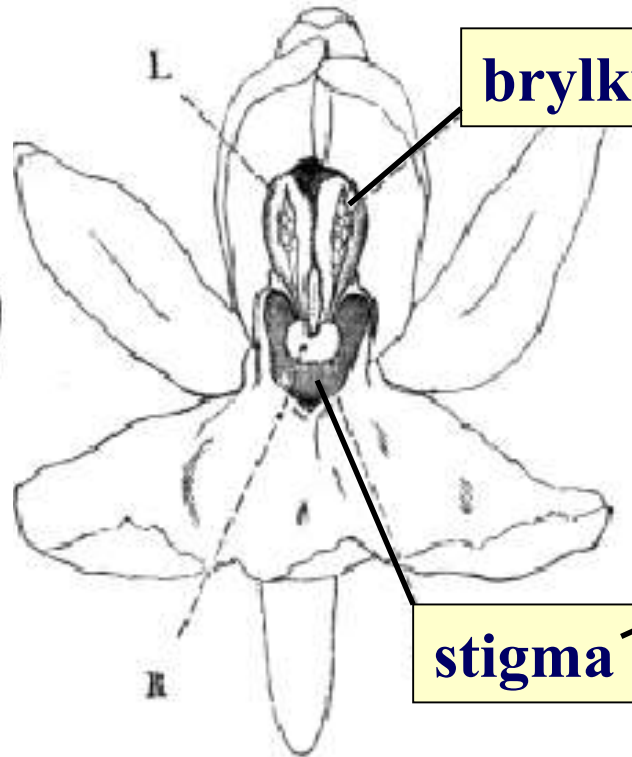
- endosperm: bez škrobu
- okvěti většinou neskvřnitě
- nektaria: na septech semeníku
- prašníky extrorzni
- osemení: fytomelanin, vnitřní vrstva degraduje
- někdy neobvyklé sekundární tloušťnutí
- často steroidní saponiny

mikrosporogeneze simultánní

mikrosporogeneze sukcedální

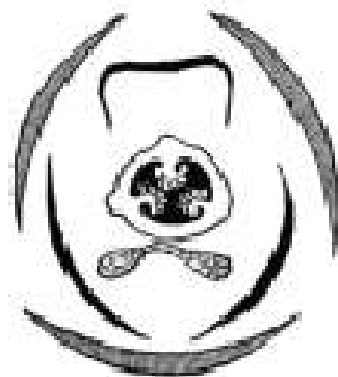
Asparagales, Orchidaceae

ř ↓ K3 C3 [A1 $\overline{G(3)}$]



brylky

stigma



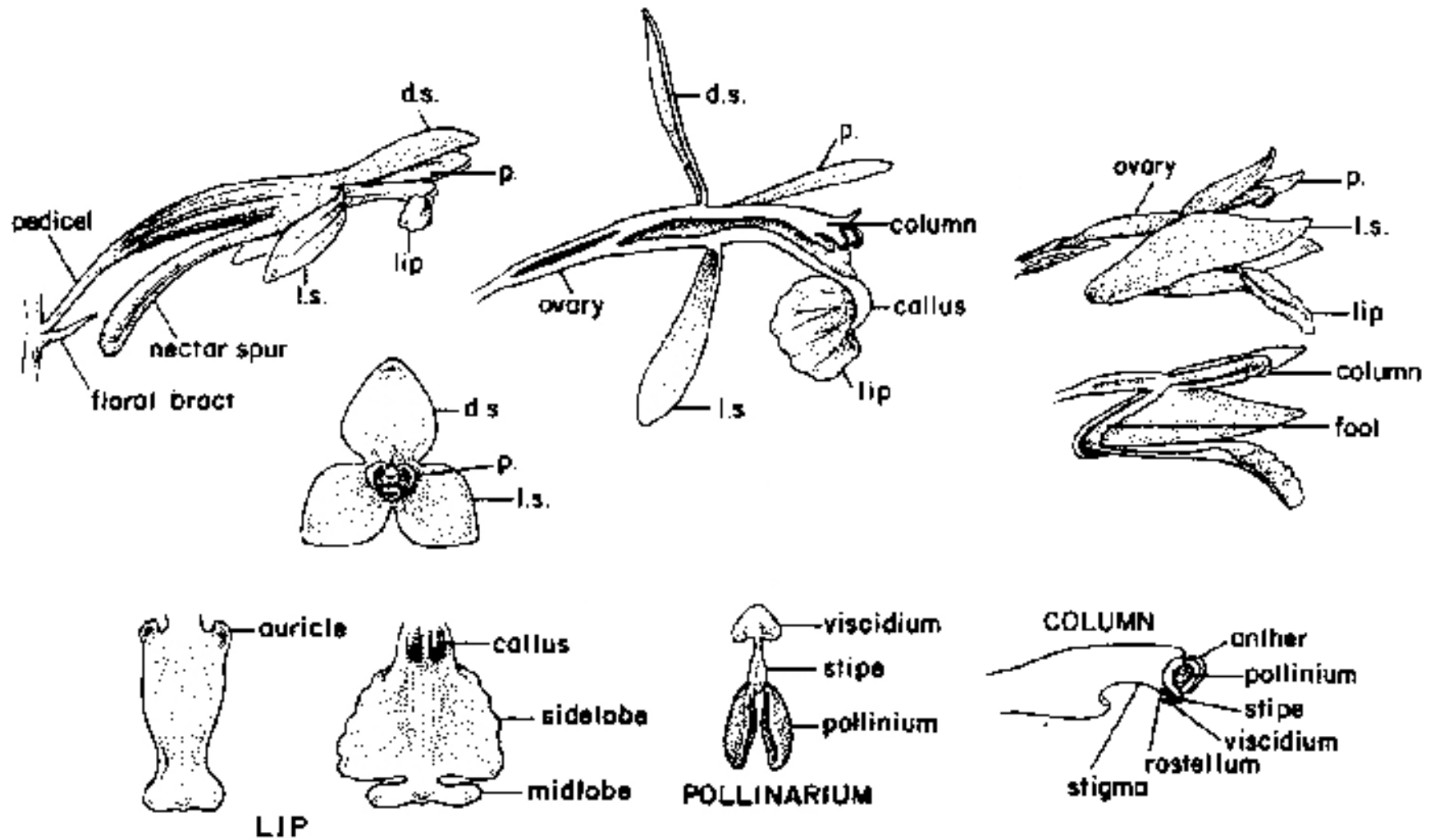
plod



brylky



Asparagales, Orchidaceae



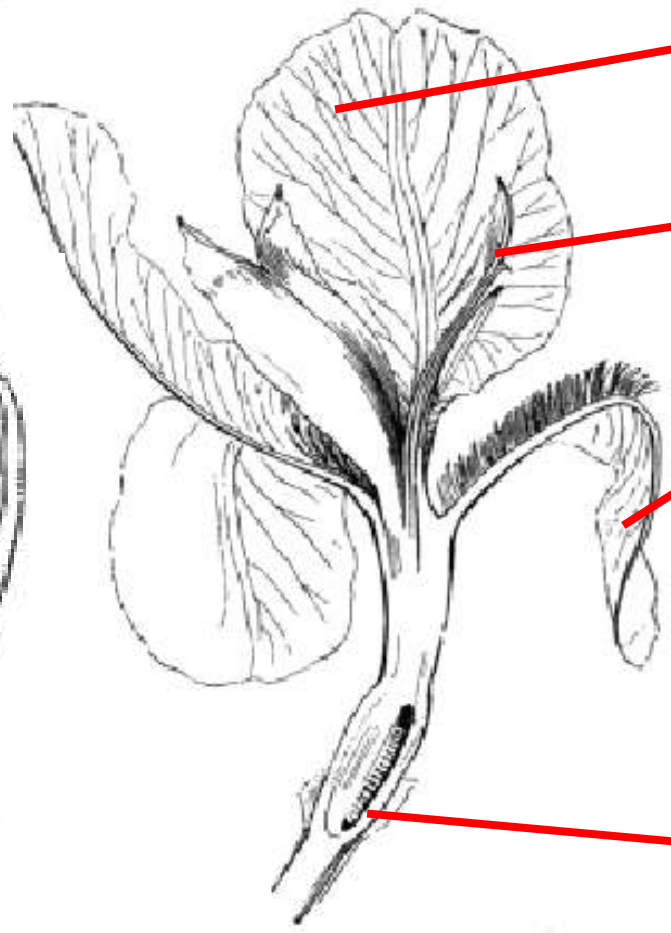
Asparagales, Orchidaceae

Cypripedium calceolus *Cephalanthera rubra* *Epipactis palustris* *Orchis mascula* *Ophrys lutea*

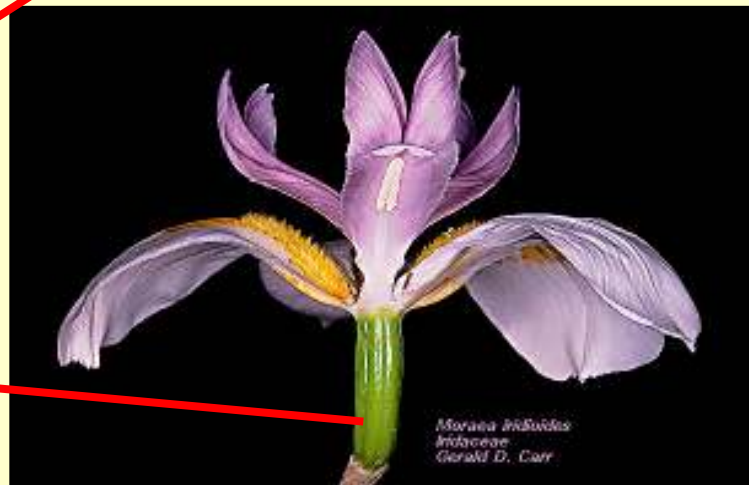


Asparagales, Iridaceae

♂ ↓/* P3+3 A3 $\overline{G(3)}$



Moraea iridioides
Iridaceae
Gerald D. Carr



Moraea iridioides
Iridaceae
Gerald D. Carr

Asparagales, Iridaceae

Iris sibirica



Iris pseudacorus

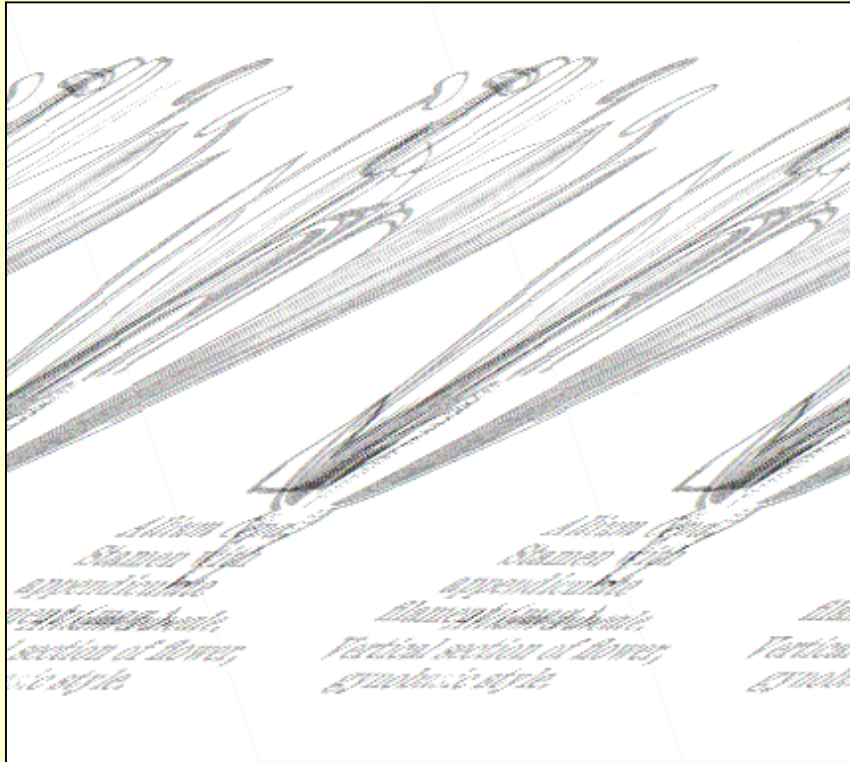


Crocus vernus



Asparagales, Alliaceae

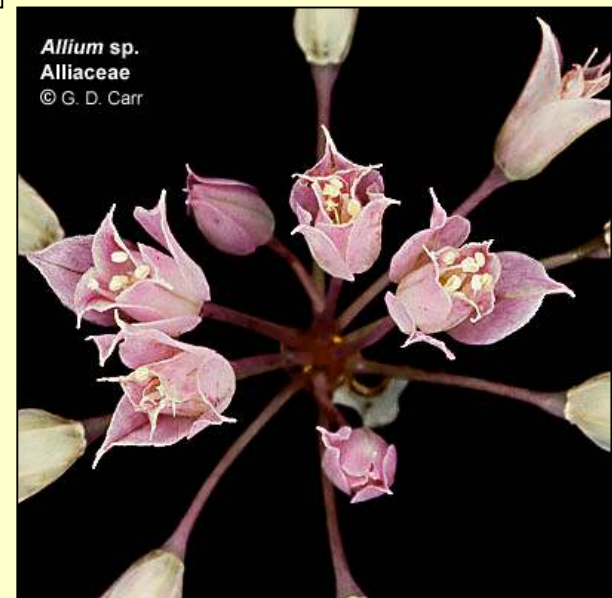
đ */↓ P3+3/(6) A3+3 G(3)



Allium oleraceum



Allium geveii
Robert L. Carr



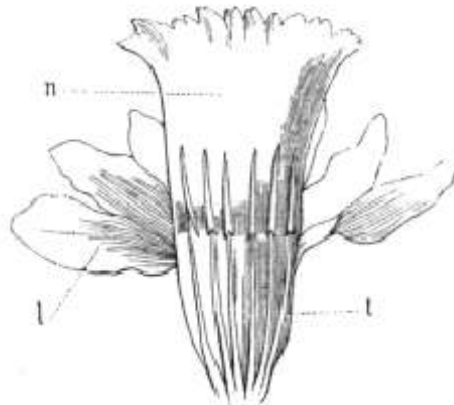
Allium sp.
Alliaceae
© G. D. Carr

Asparagales, Amaryllidaceae

đ */↓ P3+3/(6) A3+3 $\overline{G(3)}$



Narcissus pseudo-Narcissus.
Flower.



Narcissus.
Perianth and androecium laid open.
t. tube; l. limb; n. crown.



Narcissus. Pistil.



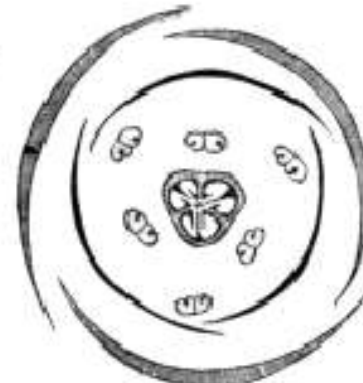
Narcissus poeticus



Galanthus nivalis



Snowflake.
Flower cut vertically (mag.).



Snowflake,
Diagram.



Leucojum vernum

Asparagales, Hyacinthaceae

Muscari racemosum



Hyacinthus orientalis



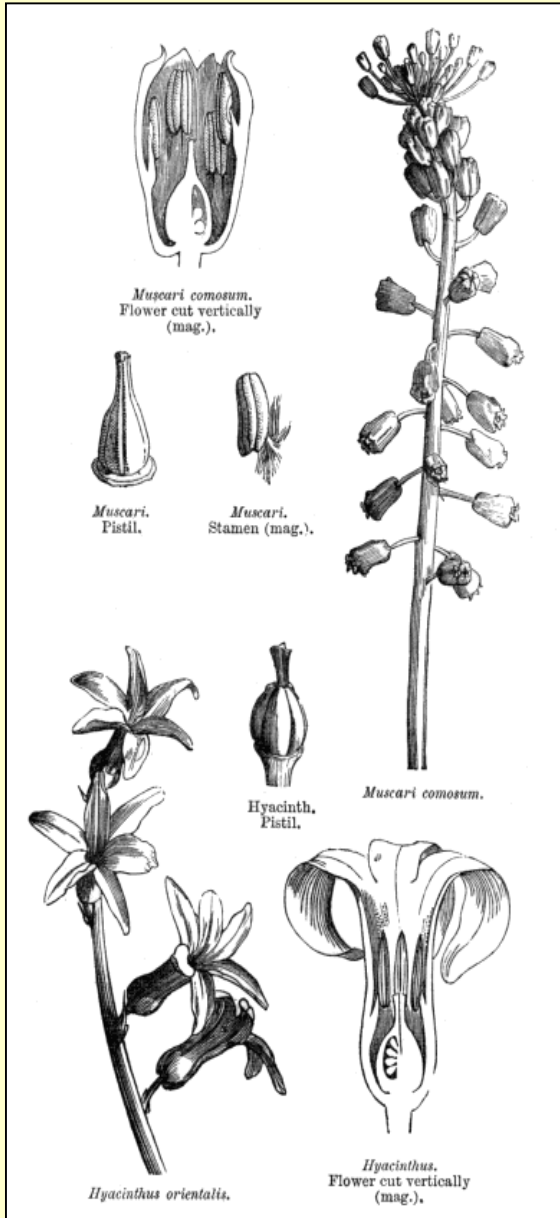
Ornithogalum umbellatum



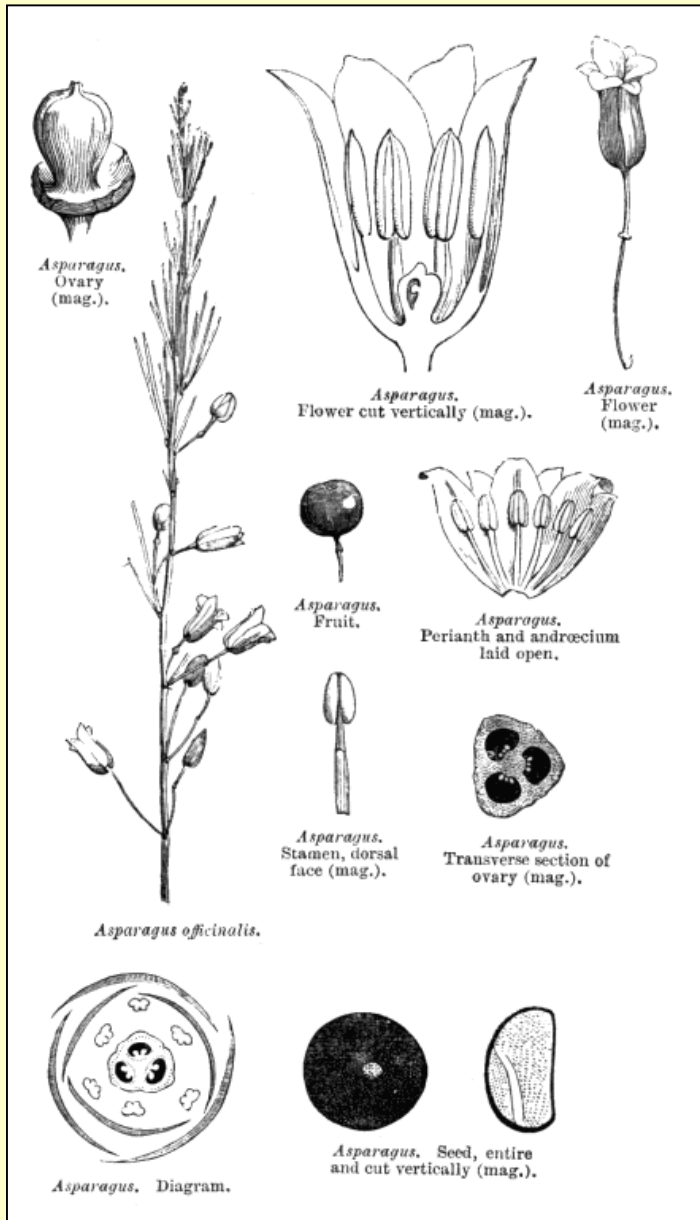
Scilla sibirica



Chionodoxa luciliae



Asparagales, Asparagaceae



Asparagales, Ruscaceae (=Convallariaceae)

Ǿ * [P(6) A6] G(3)



Convallaria majalis

Maianthemum bifolium



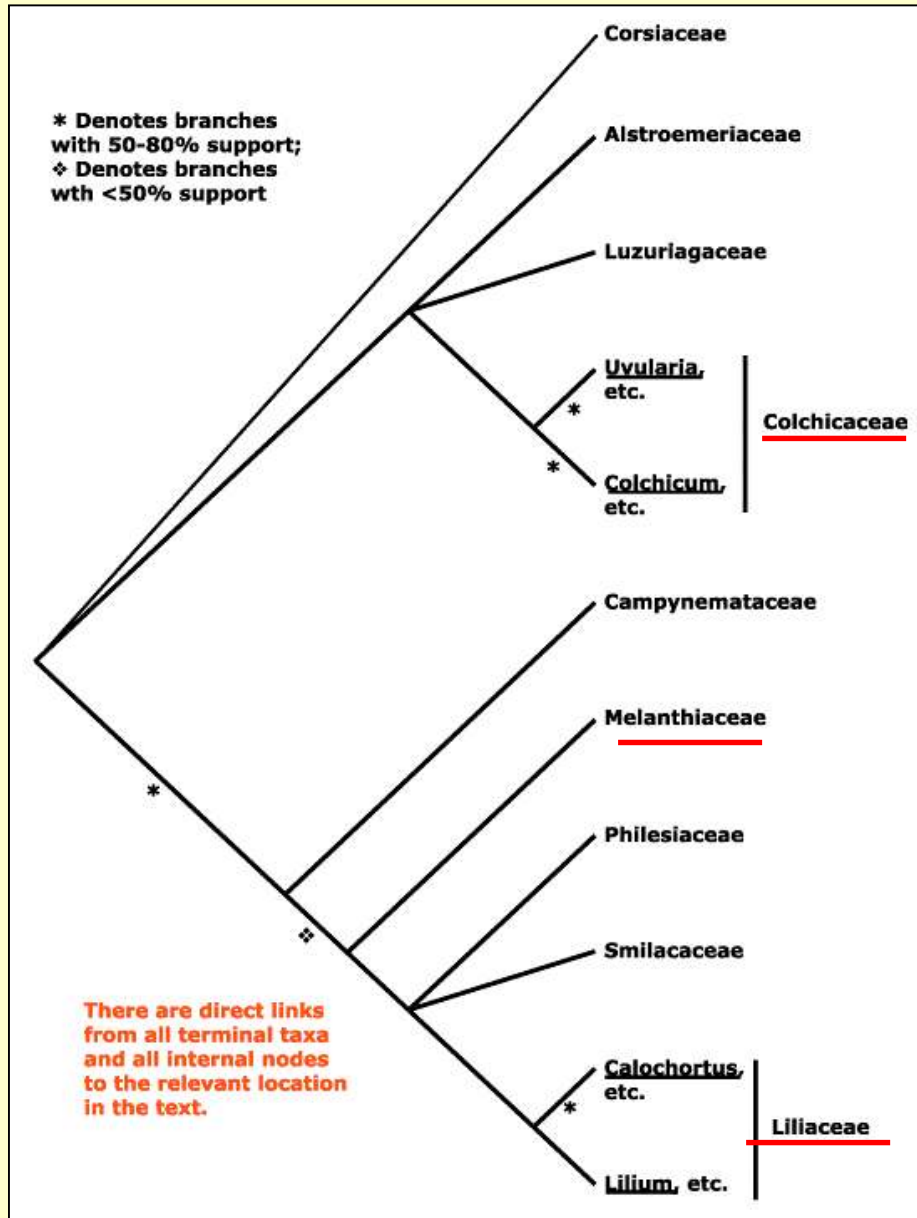
Asparagales, Ruscaceae (=Convalariaceae)



Polygonatum multiflorum

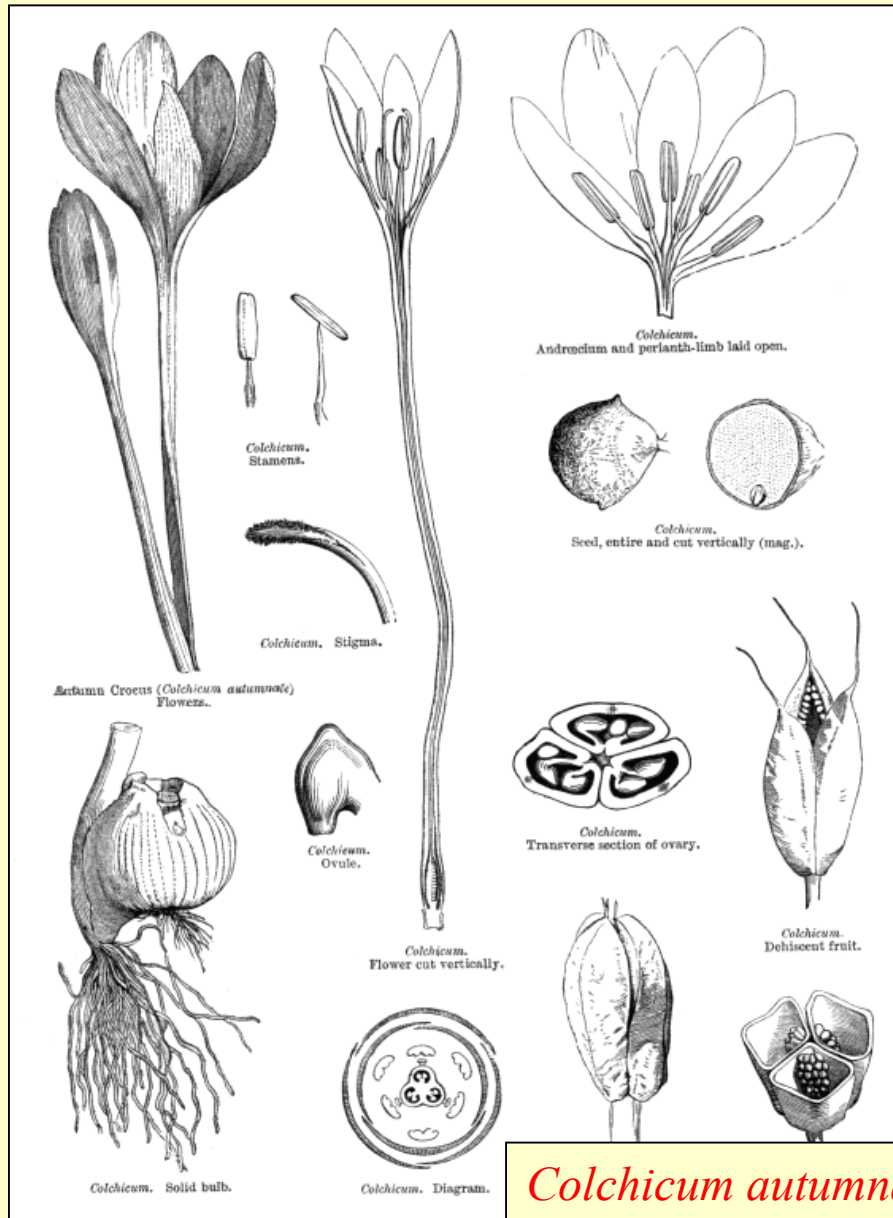


Liliales



- endosperm: bez škrobu
- nápadné okvěti, často skvrnité
- nektaria: na bázi okvěti či tyčinek
- prašníky: extrorzní
- osemení: chybí fyto melanin, nedegraduje (buněčná struktura zůstává zachována)
- často steroidní saponiny
- sekundární tloušťnutí vždy chybí
- 10 / 1 300

Liliales, Colchicaceae

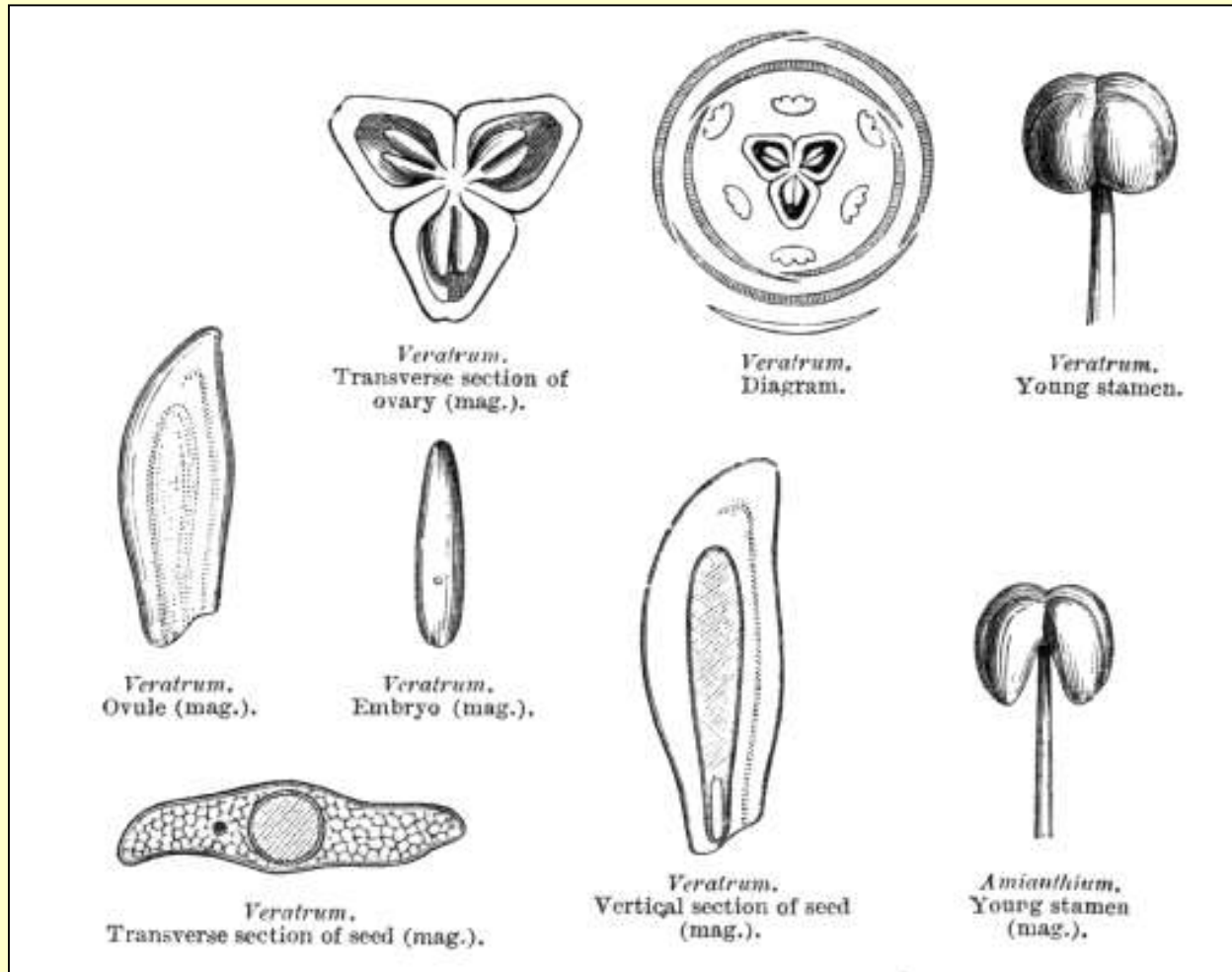


Colchicum autumnale

Gloriosa superba



Liliales, *Melanthiaceae*



Veratrum lobelianum

Liliales, *Liliaceae*

ǫ * P3+3 A3+3 G(3)



Liliales, *Liliaceae*

Lilium martagon



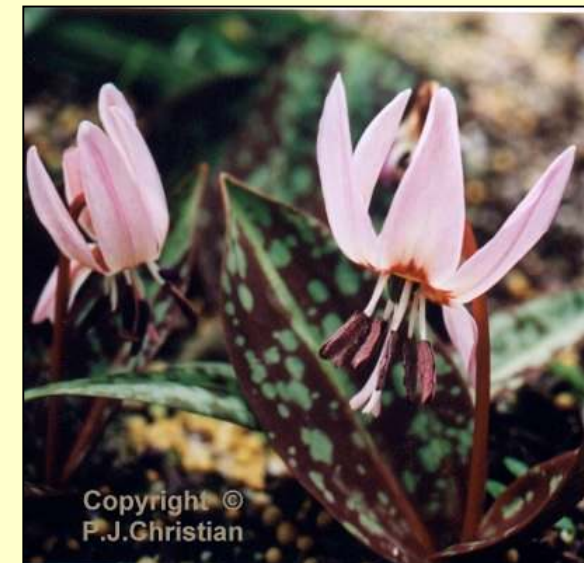
Lilium bulbiferum



Gagea lutea



Erythronium dens-canis

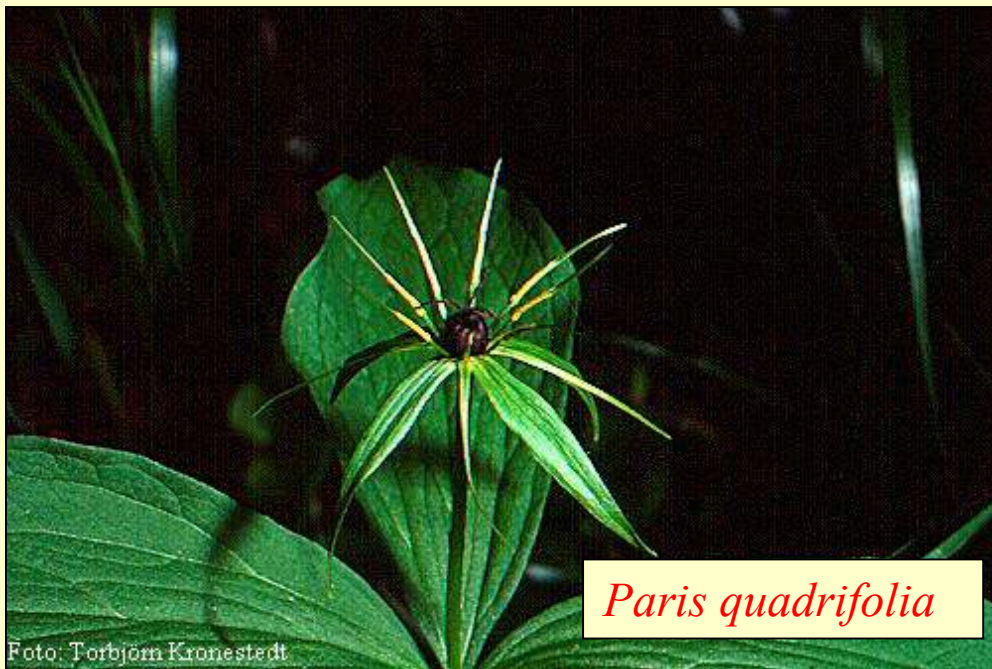


Fritillaria meleagris



Liliales, *Triliaceae*

ř * K3-8 C3-8 A6-16 G(3-8)



Paris quadrifolia



Trillium